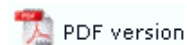




Queue Setup

[Manage Data Folders](#)
[Manage Substitution Files](#)
[Manage Split Rule Files](#)

Manage Split Rule Files

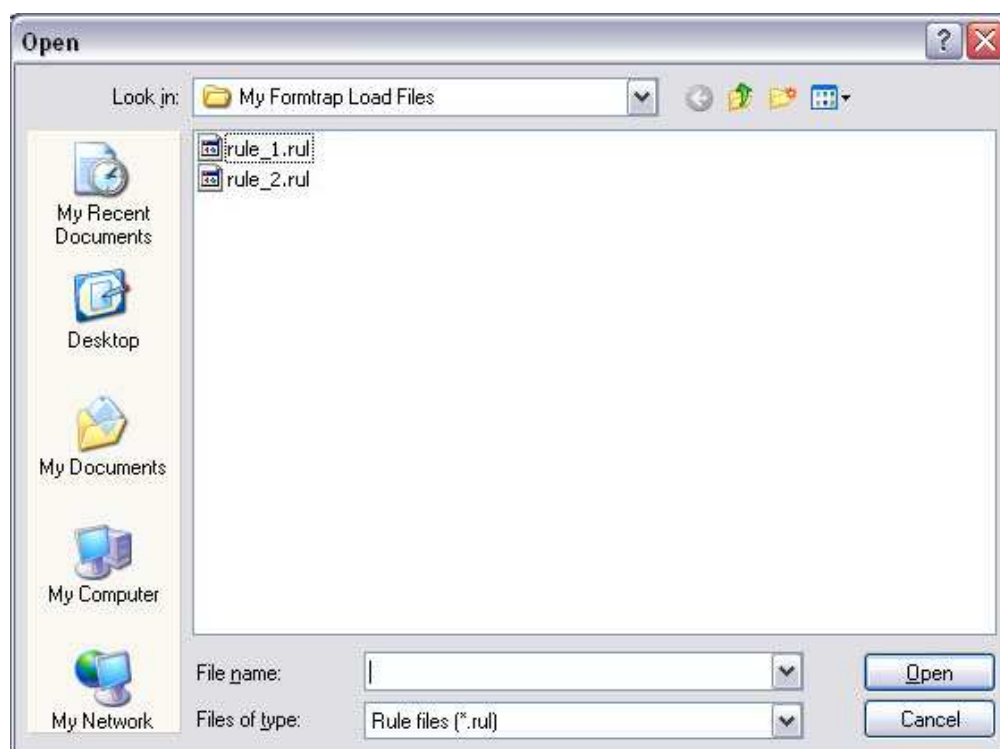


The single Split Rules folder is at root level.

Add a Split Rule File

To add a Split Rule File:

- Select **Split Rules** in the tree structure.
- Click the **Add Split Rules** button.
- A dialog box pops up to allow you to add split rule file(s). Select the rule file(s) you wish to add and click **Open** to finish.

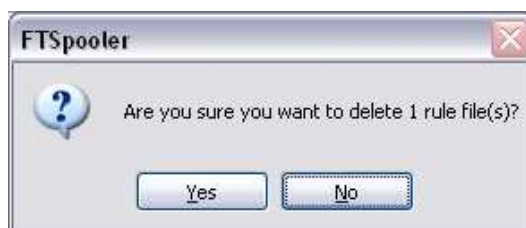


Top

Delete a Split Rule File

To delete a Split Rule File:

- Select the split rule file(s) you wish to delete under **Split Rules** in the tree structure.
- Click the **Delete** button.
- The dialog box pops up to confirm the deletion process. Click **Yes** to finish.



Top

[Disclaimer](#) | [Home](#) | [About Us](#) | [News](#)
[Products](#) | [Customer Area](#) | [Free Trial](#) | [Success Stories](#) | [Contact Us](#)
Copyright © 1995 - 2010 TCG Information Systems Pty. Ltd. All rights reserved.