



Queue Setup

[What is a Queue](#)

[Create a Queue](#)

[Delete a Queue](#)

[Queue Properties](#)

General

Processing

Filters

Print

Email

Fax

File

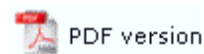
Applications

[Print to ANY Windows](#)

[Printer](#)

[Tools](#)

Queue Properties



Select the queue to change by highlighting it. Update the queue settings in the Properties Bar on the right side of the FTSpooler Window.

General

This tab defines the queue and its [Data Input Method](#), [Notification](#) and [Archive](#) properties.

Queue name must be supplied and unique.

General Processing Filters Print Email Fax File Applications

Queue name:

Data Input

Input services:

☒ Line printer (LP)

☒ File system

☒ Named pipe

Notify

Notification Type:

▼

E-mail address (name@domain):

Archive

☒ Number of days to keep records:

☐ Treat absence of recipients as an error

☒ Keep replication order

Three **Input Services** of **Data Input** to FTSpooler are available: **Line Printer(LP)**, **File System**, and **Named Pipe**.

- **Line printer** allows users to treat the queue as a printer. You may:
 - use lp/lpr from Unix
 - define and write to an LPR printer from Windows
 - use a "Work Station Customization Object" from a AS/400 to "print" files directly to the queue

[More information on Unix LPR Printers](#)
[More information on Windows LPR Printers](#)

- **File system** allows the user's application or a copy statement to write a

file directly to the queue folder. Queue folders are by default located under the SpoolRoot folder, normally located below the FTSpooler folder. This is the normal path and file name to the queue folder Sample Queue shown in the screen shot, file name can be a constant:

C:\Program Files\TCGIS\FTSpooler\SpoolRoot\Sample Queue\filename.txt

[More information on File system](#)

- **Named pipe** allows the user to pipe data from their application to a queue, provided the application is able to directly use a pipe. FTSpooler generates a pipe called \\ServerName\pipe\QueueName (where ServerName is replaced with "." (dot) if writing from an application on the FormTrap server to the queue on the same machine).

[More information on Named pipe](#)

Notify notifies users about completion of a job via e-mail. Choose to **notify on success**, **notify on error**, or **always notify**, from the **Notification Type** dropdown menu. Enter a valid email in the **E-mail address** line.

Archive enables you to specify the **Number of days to keep the records** for this queue.

No recipient to the queue is reported as an error if the option **Treat absence of recipients as an error** is checked. This reports an error when no direct output (such as an email recipient) is activated for a document.

Keep replication order processes split documents from the one input file in arrival order, effectively single-threading the queue. This is the default and can be unticked. Unticking allows multiple threads (to the limit in **Setup, Settings, Maximum ... threads**) meaning the job will process faster with unpredictable output order.

Click the **Apply** button to save the changes.

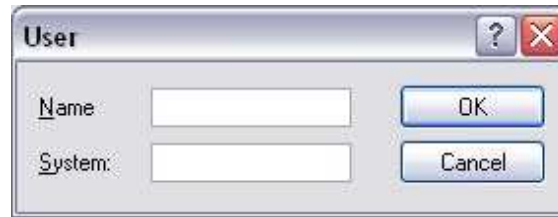
[Top](#)

Security for File system and Named pipe

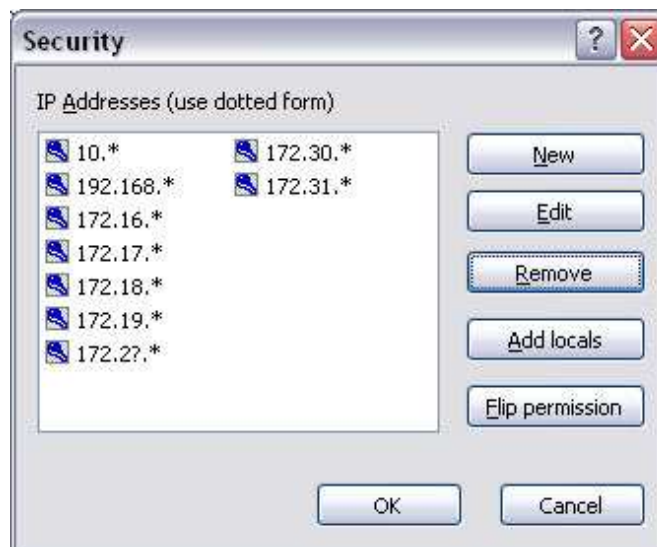
This setting determines which users or groups have write permission to this queue, meaning you have tight security control over who is allowed to send data to FTSpooler. **Default** is the common selection and provides the same inherited security setting as the folder above the queue folder. **Unrestricted** provides full write permissions to all users while **Access control list** allows addition/removal of specific users or groups allowed to write to this queue.



To add the Users or Groups for Access control option, click **Add** button and enter Name and System name for the user.



The **Line printer** selection (unlike **File system** and **Named pipe**) uses IP Addresses to secure jobs. The **Add locals** button automatically adds all local IP Addresses to the list. **Flip permission** allows the selected IP Address permissions to be set to the reverse of what is currently shown (i.e. locked or unlocked).



Top

File system: Folder options

In this dialogue box define whether this queue folder is shared across the network:

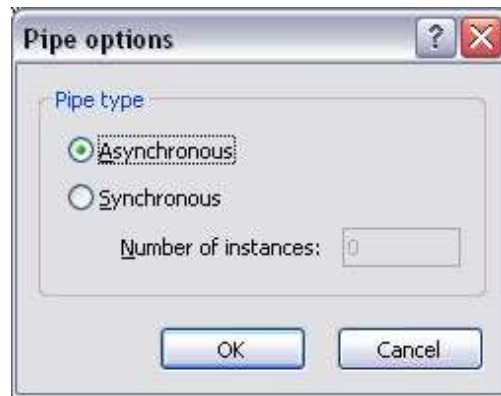


- **Unchanged** - FTSpooler does share or remove share for the folder. The system administrator takes responsibility for sharing this folder on the network.
- **Share** makes the queue folder available as a network shared object.
- **Do not share** hides this folder from the network.

Top

Named pipe options

This allows the pipe type to be defined as either **Asynchronous** (returns control immediately meaning the transfer takes place as a background task) or **Synchronous** (meaning the pipe maintains the current thread until data has been transferred). For synchronous pipes, enter the **Number of instances** (concurrent instances), keeping this number as low as possible.



- **Asynchronous:** number of users is not limited.
- **Synchronous:** number of instances controls how many users can use the pipe simultaneously.

[Top](#)