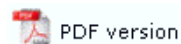




## Special Forms

[Special Forms](#)  
[CSV Output File](#)  
[QAD Forms in Chinese](#)  
[Multi-Page Forms](#)  
[Personal Emails](#)  
[Poster Printing](#)  
[Contracts and Other Documents](#)  
[Quantity Masking](#)  
[Salutation Masking](#)  
[Widow/Orphan Size](#)  
[Writing Letters](#)  
[Fax from your ERP System](#)

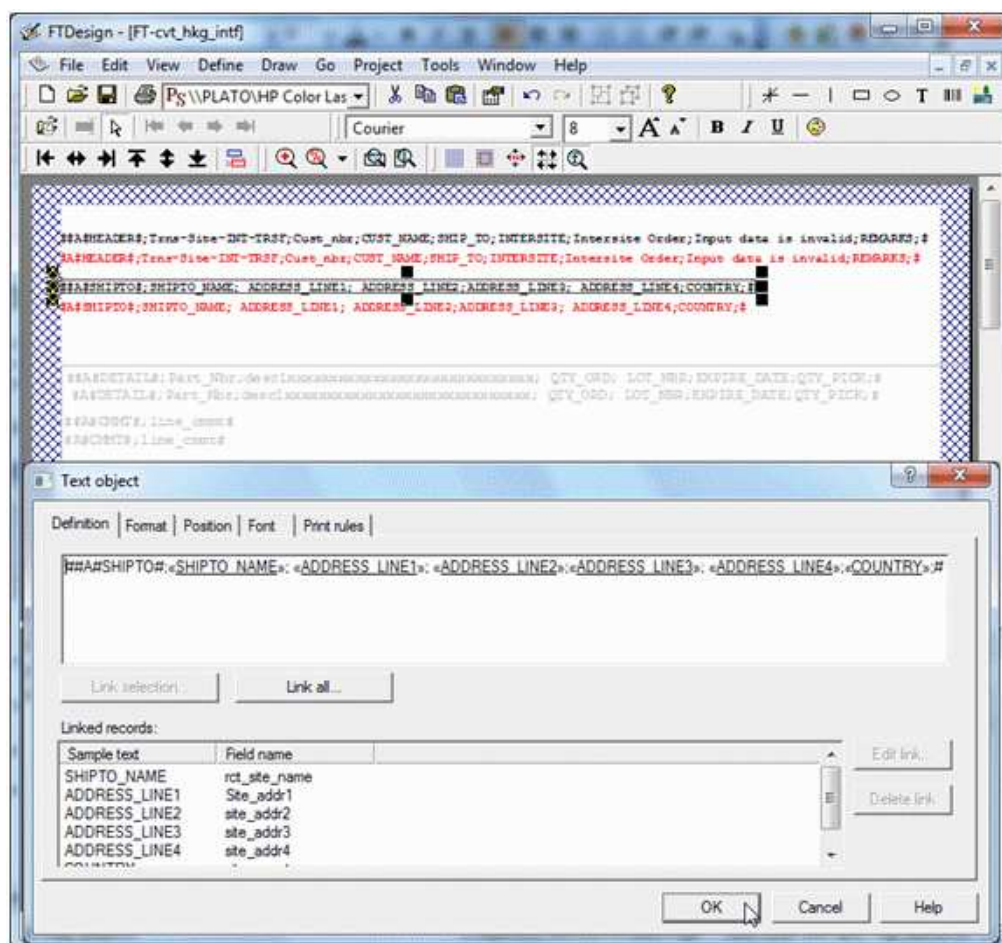
## CSV Output Files



### CSV Output Files

Comvita (NZ Medical Honey company) use a third party fulfillment system in Hong Kong to fill orders and required an automated way to get the data from their QAD picking/invoicing systems to the third party. After discussion with TCG we designed a form to pass the data to their the third party computer fulfillment system using Separated Files produced from FormTrap.

You can output a CSV file using the Associated File command, like this:



Here we construct Associated File lines with all of the fields required, starting with the ; (semi-colon) separator (so this is strictly a semi-colon separated file). The same is done for the initial "Header" portion and for each of the Detail and Comment lines as well. The Red items are missing the initial #, hence print and are used for checking the output during testing. These are taken out for production (subsequent provision in FTDesign to look at the Associated File now makes the red lines redundant).

This is the output.

```

0      10      20      30      40      50      60      70      80      90      100      110      120      130
HEADER=:308-06/04/2009: 302 :Department Store Counter : 302 :Department Store Counter :Interstate Order:08/02/2011:REMARKS:
SHIFT=:Department Store Counter : :TSUEN WAN : :NONG NONG :
DETAIL=:311 :NUNI DAY SACH 1.5ML : : 100.00:16078308 : :28/02/2011: 100.00:
DETAIL=:312 :NUNI NIGHT SACH 1.5ML : : 100.00:16070470 : :28/03/2011: 100.00:
DETAIL=:363 :PROP LOT L&H 500G : : 18.00:15897299 : :31/03/2011: 18.00:
CMGT=:Attach Product Label 5332C To Each Unit
DETAIL=:364 :PROP LOT CHINT 500G : : 4.00:3 : :01/03/2011: 4.00:
CMGT=:Attach Product Label 5333C To Each Unit
DETAIL=:5348A :BAG BLK 39X34X10 PP : : 20.00:104/05/2014: 20.00:
DETAIL=:5349A :BAG BLK 26X31X10 PP : : 30.00:104/05/2014: 30.00:
DETAIL=:5351A :BAG 30X30X15 JUTE : : 20.00:104/05/2014: 20.00:
DETAIL=:5356A :BOOK RITCHA OLIVE CHN : : 20.00:104/05/2014: 20.00:
DETAIL=:860 :OMEGA 3 CAPS 75 : : 12.00:15547457 : :28/07/2010: 12.00:
CMGT=:Attach Product Label 5314A To Each Unit
DETAIL=:864 :NUNI CLEANSER SACH 1.5ML : : 100.00:16075308 : :28/02/2011: 100.00:
DETAIL=:865 :NUNI SERUM SACH 1.5ML : : 100.00:16075309 : :28/02/2011: 100.00:
DETAIL=:866 :NUNI WHITNG SACH 1.5ML : : 100.00:16075310 : :28/02/2011: 100.00:
DETAIL=:EXP112 :NON MAN 5+ 1KG : : 36.00:16119880 : :28/02/2014: 36.00:
CMGT=:Attach Product Label 5300A To Each Unit
DETAIL=:EXP170 :NON MAN BLD 1KG : : 12.00:1575702 : :28/01/2014: 12.00:
CMGT=:Attach Product Label 5305A To Each Unit
DETAIL=:EXP273 :NON MAN 10+ 500G : : 48.00:16111841 : :28/01/2014: 48.00:
CMGT=:Attach Product Label 5301A To Each Unit
HEADER=:308-06/04/2009: 302 :Department Store Counter : 302 :Department Store Counter :Interstate Order:08/02/2011:REMARKS:
SHIFT=:Department Store Counter : :TSUEN WAN : :NONG NONG :
DETAIL=:EXP477 :RJ CAPS 365 : : 12.00:15854254 : :28/06/2010: 12.00:
CMGT=:Attach Product Label 5310A To Each Unit
DETAIL=:EXP486 :RJ CAPS 60 : : 12.00:15926003 : :28/06/2010: 12.00:
CMGT=:Attach Product Label 5310A To Each Unit
DETAIL=:HK289 :PROP CAPS PFL15 365 HZ : : 12.00:15641956 : :09/02/2013: 12.00:
CMGT=:Attach Product Label 5321B To Each Unit

```

Spaces etc. can be removed if required by masking and there is no "maximum length" on the output.

Please note these two items:

1. Headings are best done on the Trailer label (i.e. you get one record per input document). Details will be produced as they occur so are in sequence. This document has no "trailer" so the Associated File records for Header and Trailer are duplicated further down.
2. The first character in the "detail" section must be the separator.

Top