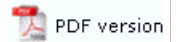




Version Upgrade Tool

FTSpooler Version Upgrade



Version Upgrade is a tool designed to upgrade the queues, forms, rules, settings and archive from FTSpooler version 4.0 through 6.4 to version 7.

Run Version Upgrade before starting Version 7 as this will retain the current settings for the new version.

Locate Components

Version Upgrade needs to locate the components of FTSpooler, such as queues, forms and rules before it processes the conversion.

Components that may not be obvious include:

- **Settings** which are transferred from V6 registry files into the XML equivalent in the Version 7.
- **Archive** transfers data from the V6 "successful jobs" archive (Microsoft DB) to the V7 FireBird DB. Standard location for Version 6 is

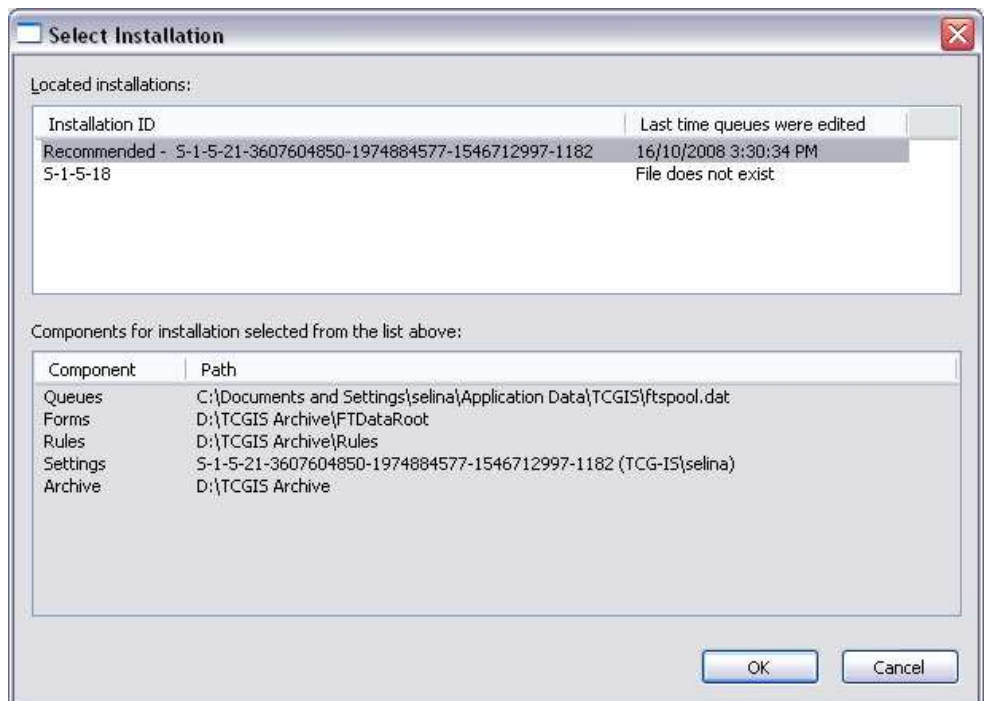
C:\Documents and Settings\username\Application Data\TCGIS\Archive.mdb

Note: You must have the FireBird service running for conversion of **Archive**.

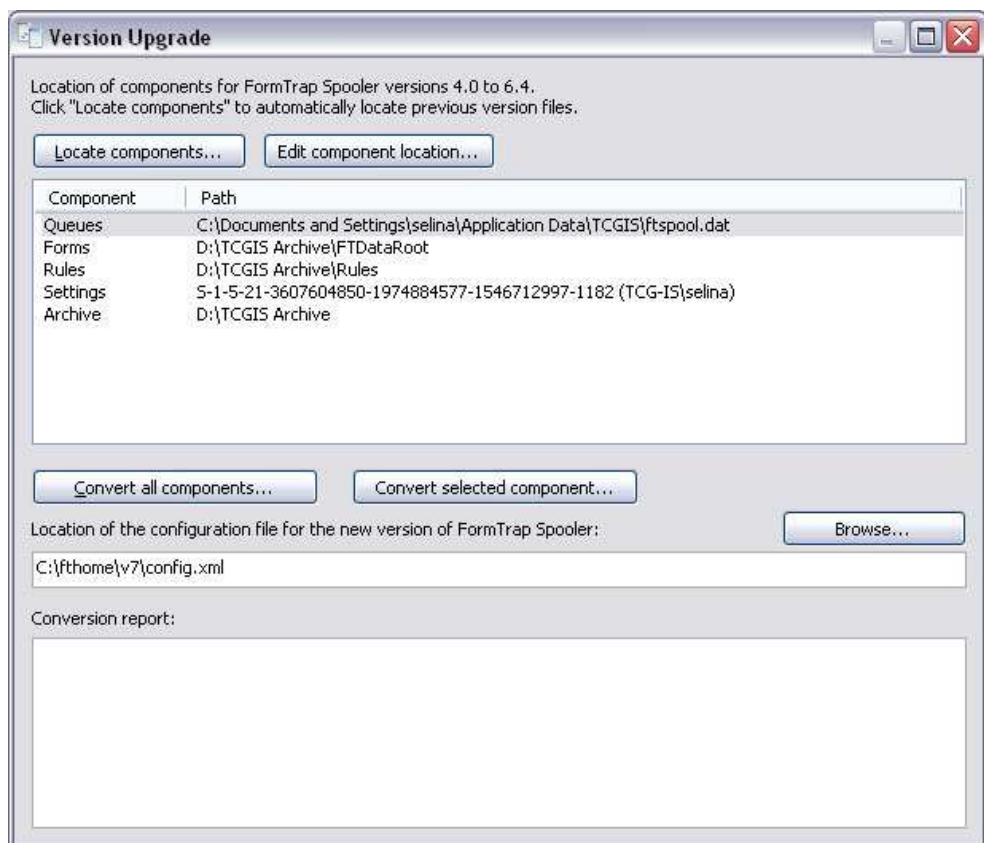
To locate components:

- Initially the **Path** column is blank (uninitialized).

- Click on the **Locate components** button. The **Select Installation** screen pops up with a list of available **Installation IDs** which refer to the windows user IDs. Multiple Installation IDs are displayed as the machine may have more than one login. The Installation ID that last modified a queue is recommended, and always listed first.



- Select one of the **Installation IDs** to show **Components** and **Paths**.
- Click **OK**.
- That path of each individual component can be changed manually. Use this option if program cannot automatically locate components or if you want to import data from alternative locations (for example backed up folders).



To edit the located components:

- Select on one of the components.
- Click on the **Edit component location**.
- Locate the component in the **Browse** dialog box.
- Click **OK**.

! Please note that the settings component represents user's installation and cannot be changed this way. To select different user installation please click **Locate components**.

Top

Forms Components

The **Forms** component is the previous Data Folder for FormTrap Spooler (regardless of version). The normal location is:

..\Documents and Settings\username\TCGIS\FTDataRoot for versions 6.x, otherwise
 ..\TCGIS\FTSpooler\FTDataRoot for versions 5.x and earlier.

For old versions, the program will transfer the files, thus saving the structures and form name association into queues (which would otherwise be lost). This transfers the logic of the Spooler, even though Project files require (new FTDesign) **Project, Build** ... with the built file(s) loaded through (FTSpooler) **Data folders**, as below.



Version 7.1 can use 6.4 files without any subsequent Build or Reload forms. Earlier version files cause an error message from **formtrap.exe**.

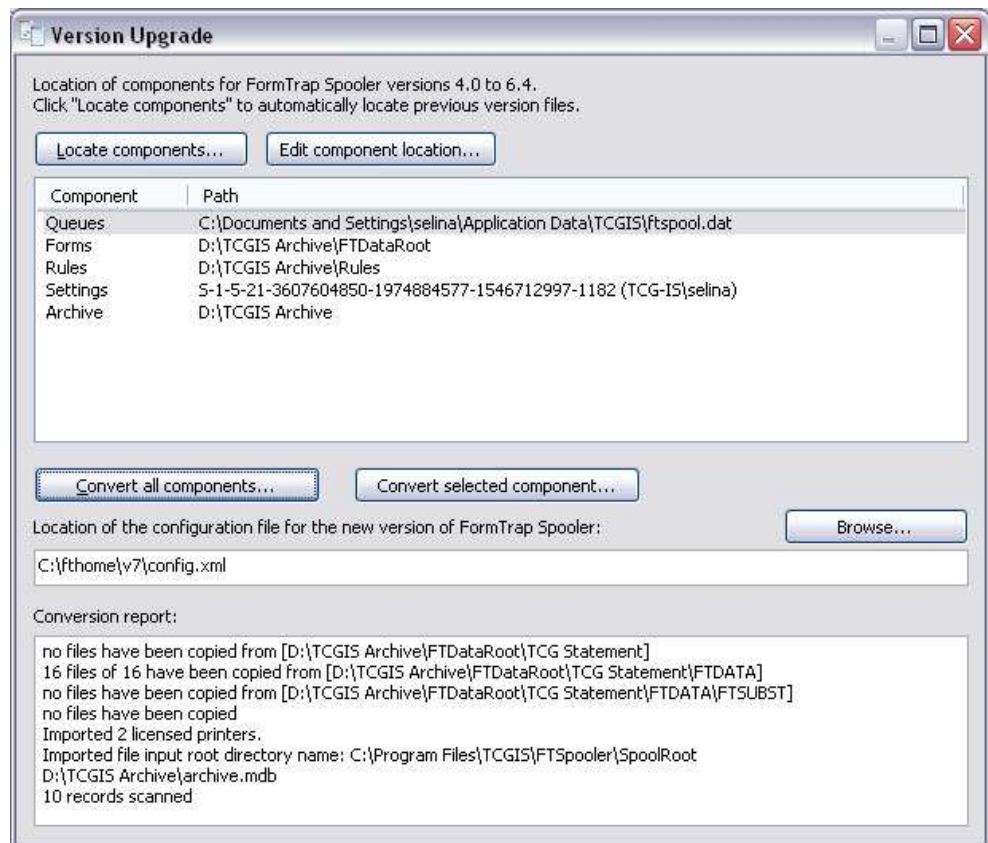
[Top](#)

Convert Components

Version Upgrade converts the selected or all components based on the chosen configuration file. To locate the configuration file, manually enter the path in the location text box, or click on the **Browse** button. For contingency purposes you are recommended to backup your existing config.xml file before commencing with conversion.

To convert components:

- Click on the **Convert all components** button, or select on one of the components and click the **Convert selected component** button.
- The **Conversion report** shows the processes that are done.



[Top](#)

[Disclaimer](#) | [Home](#) | [About Us](#) | [News](#)
[Products](#) | [Customer Area](#) | [Free Trial](#) | [Success Stories](#) | [Contact Us](#)
Copyright © 1995 - 2010 TCG Information Systems Pty.Ltd. All rights reserved.