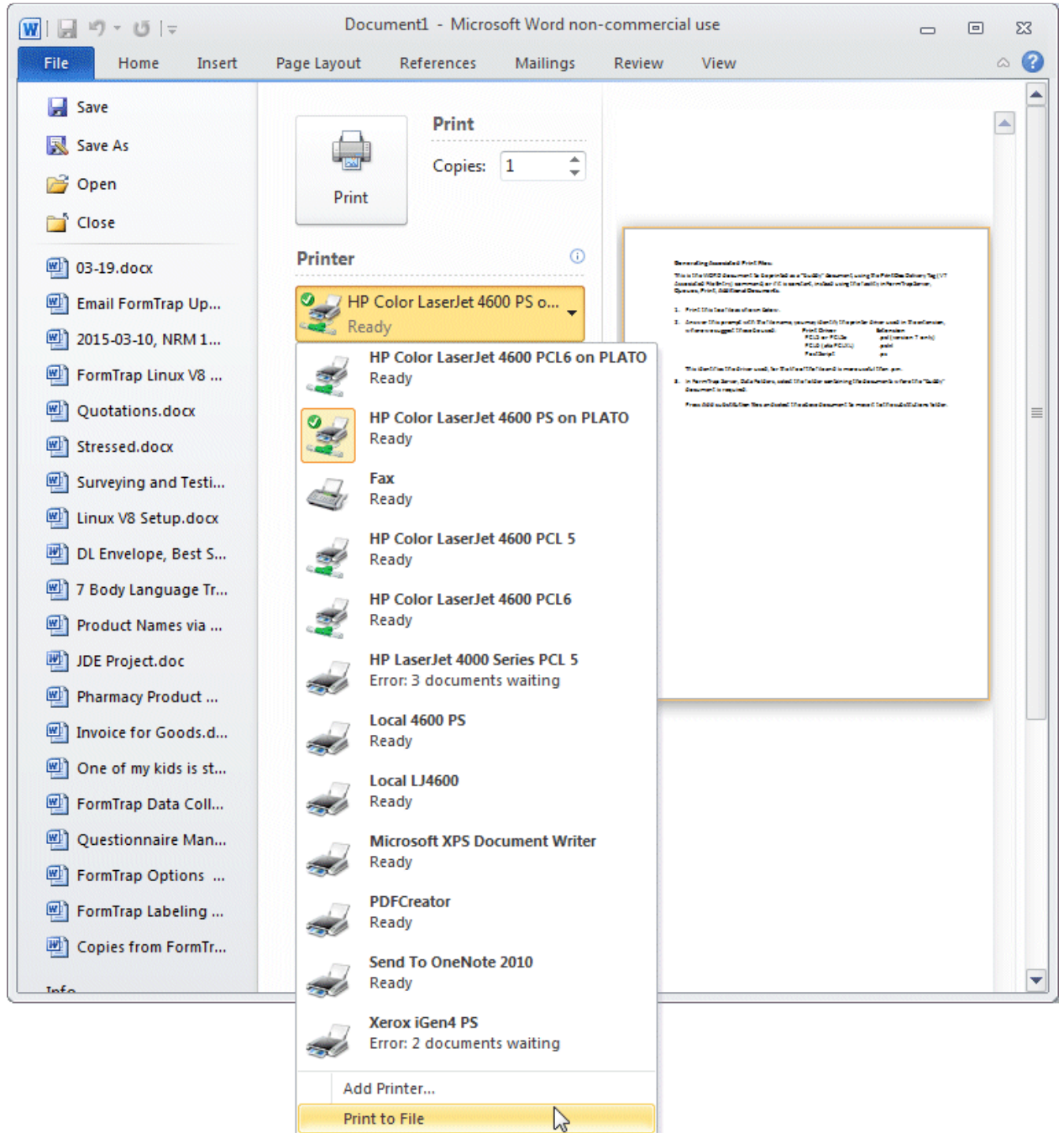


Generating Associated Print Files:

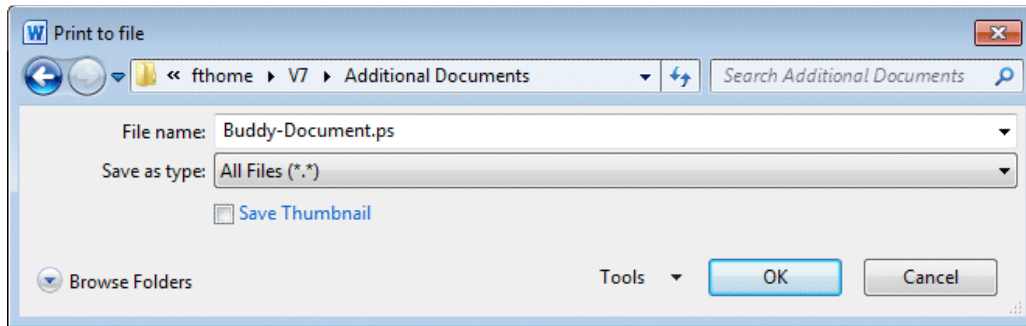
This is the WORD document to be printed as a “buddy” document, using the **PrintDoc** Delivery Tag (V7 Associated File Entry) command, or if it is constant, instead using the facility in FormTrap Server, **Queues, Print, Additional Documents**.

WORD Documents

1. Print this to a file as shown below (note **Print to File**, last on screen shot is selected):



2. Answer the File Name prompt where you should identify the printer driver used in the extension.



Select **Save as type: All Files (*.*)** from the pull-down, then use these as the extensions:

Print Driver	Extension
PCL5 or PCL5e	.pcl (version 7 only)
PCL6 (aka PCLXL)	.pclxl
PostScript	.ps

This identifies the driver used, for the life of the file and is more useful than **.prn**.

3. In FormTrap Server, **Data Folders**, press **Add substitution files** and select required “buddy” document(s) which moves them to the substitutions folder.

Non-WORD documents

Any other document may be printed where Step 2 above is available to produce Additional Print Documents, even PDF documents may be printed this way (although the finished file size is excessive).

Testing Documents

You can test documents by printing to the printer using this CMD line, provided your printer has the correct driver type :

```
copy /b docname.ext //yourserver/yourprinter
```

Note that some printers handle PDF documents directly

Please Note in FormTrap Server

FormTrap documents use prefixed PDL commands to select the correct driver type, even if the printer itself is different. Hence a FormTrap documents may be in PostScript for a printer that is nominally PCL6. You will have to take this into account in the FormTrap Server, **Queue, Print** tab.