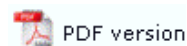




Getting Started

[The Design Workspace](#)
[Design Workspace Setup](#)
[Prepare your workspace](#)
[Paper Size](#)
[Page Orientation](#)
[Double sided printing \(Duplex\)](#)
[Tombstones](#)
[Grid](#)
[Custom Grid Definition](#)
[Scan from Image Forms](#)
[Response Grid](#)
[Manual Timing Marks](#)
["Fat" Response Shape](#)
[Blind and Other Colors](#)

Setting up the Design Workspace



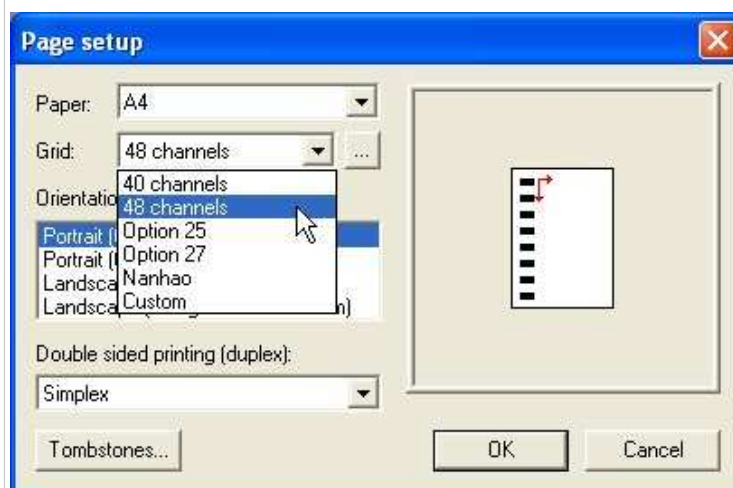
All OMR forms have a timing track, a row of black boxes on the long edge of the page, that is scanned by the form reader to determine where response positions can be found. Scan From Image forms instead use "Tombstones" or black marks at the extremities of forms.

At each timing track the OMR looks horizontally across the page for marks to see if a response has been filled in. The information collected from the responses is then translated by the reader according to the zone the response is in, and the responses on the form can then be interpreted.

FoD-OMR automatically sets the timing track and response positions according to the settings for your reader. The position of the timing track on the page is determined by the page layout.

To change the form's orientation and set up the response grid or tombstones:

Select Page Setup from the File menu.


[Top](#)