



## OMR Zones

[About OMR Zones](#)

[Matrix Zones](#)

[Random Zones](#)

[Assigning Text to Choices](#)

Assigning text to choices

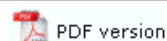
Positioning text and response shapes

Origin

Decorating Zones

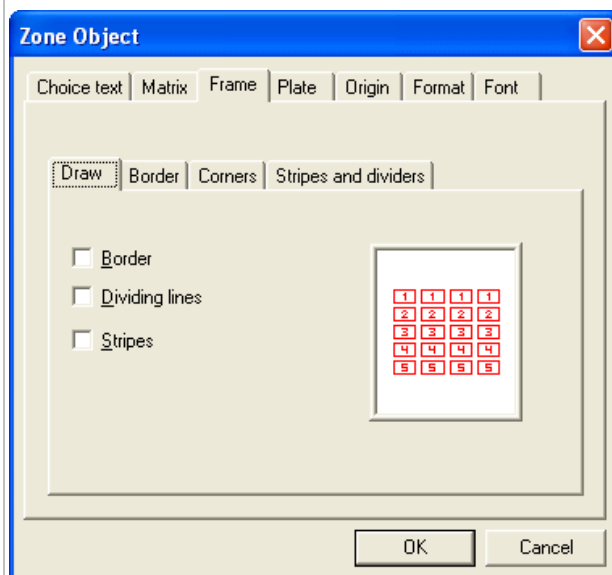
Format & Font

## Decorating zones



With FoD-OMR, you can easily add borders, dividers and shading to zones to improve the readability and selection of zones choices.

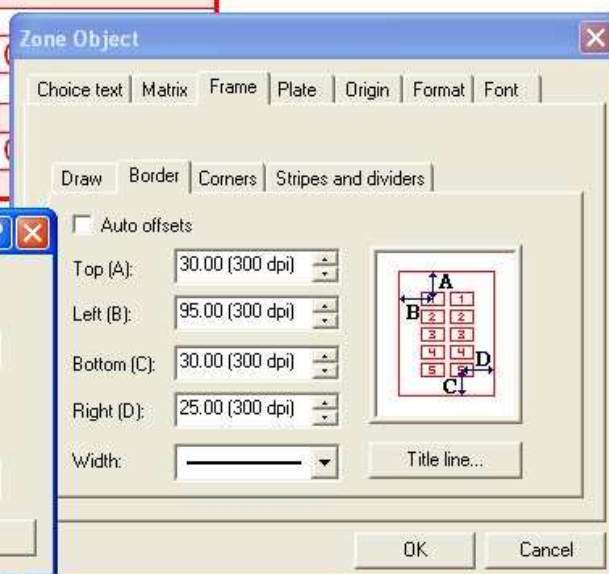
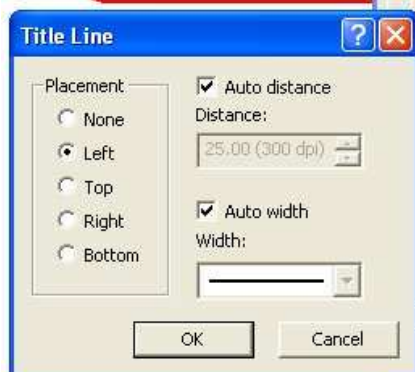
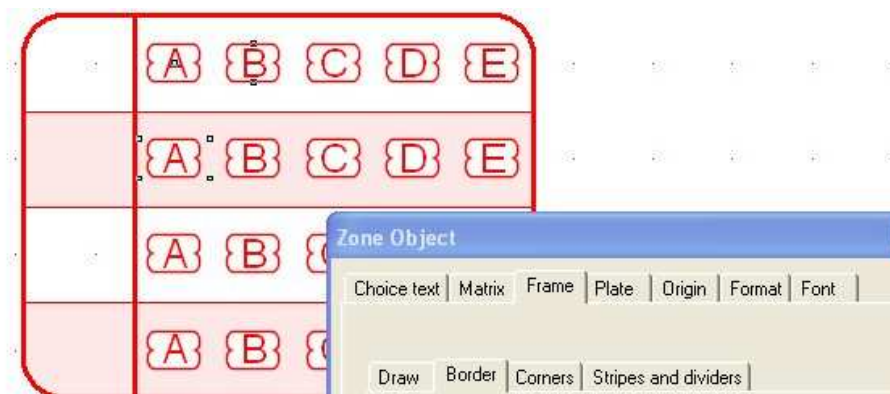
By clicking the **Frame** tab of the **Zone Object** dialog box, you can set the style for borders, dividing lines, and alternating stripes.



### Border dimensions

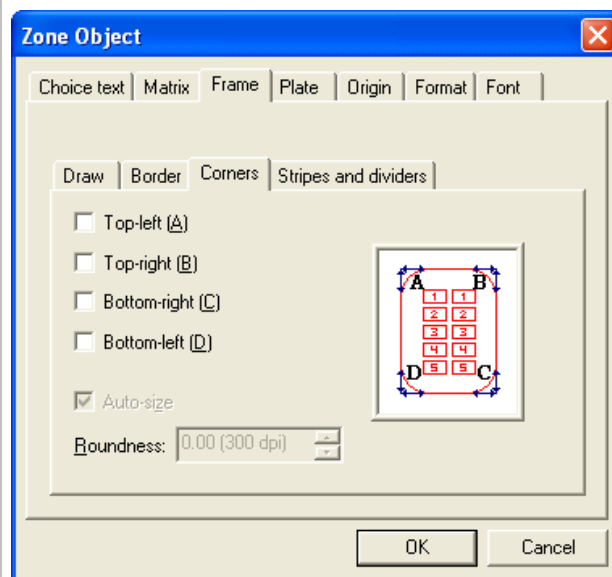
If you add a border to a zone, you can set the distance of the border from the zone choices, and the thickness of the line, from the **Border** tab.

Uncheck the **Auto offsets** box to set custom border dimensions.



### Border corners

You can round each of the corners of the border and set the radius of the rounded corners by unchecking the **Auto-size** box on the **Corners** tab.

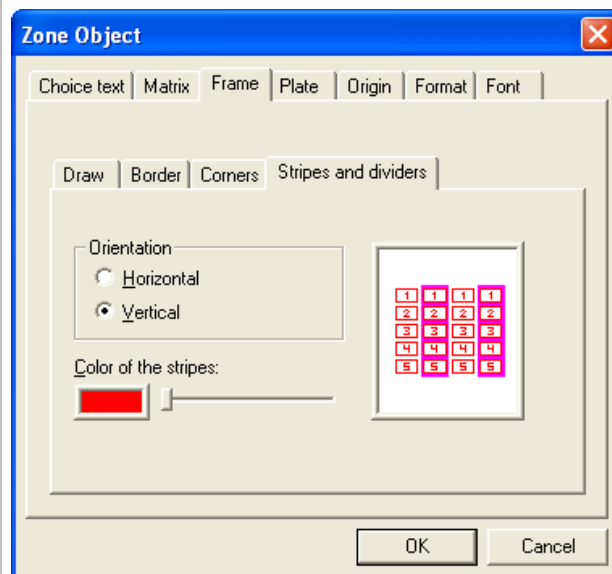


Top

### Stripes

Adding alternating stripes to large matrix zones greatly eases filling out your form. You can orient the stripes and shade the color of the stripes to your OMR scanner's blind color range.

[More information on Blind Colors](#)



Top