



OMR Zones

[About OMR Zones](#)

[Matrix Zones](#)

[Random Zones](#)

[Assigning Text to Choices](#)

Assigning text to choices

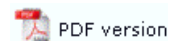
Positioning text and response shapes

Origin

Decorating Zones

Format & Font

Format & Font

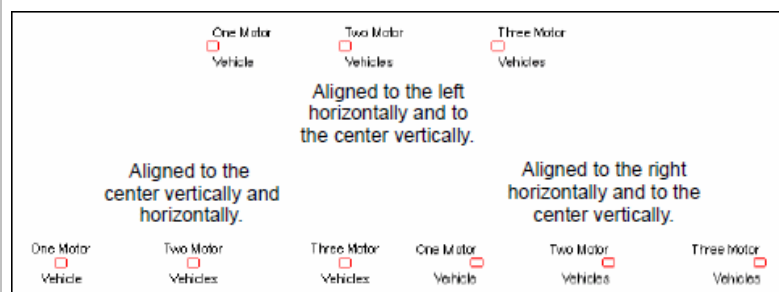


Format

By selecting the **Format** tab, you can arrange the text relative to the responses. This operates in conjunction with the **Text Offset from Mark** (see [Positioning text and response shapes](#)) and gives you precise control over placement and appearance of response text.

The Zone Object dialog box, Format tab, shows settings for text alignment and line spacing. The Alignment section has Horizontal and Vertical dropdowns, both set to Center. The Line spacing section has a Type dropdown set to Single and an Exact input field. The Tabs section has radio buttons for Auto (selected), Equal (with a value of 0.00 [300 dpi]), and List (with a List setup... button). The dialog has OK and Cancel buttons at the bottom.

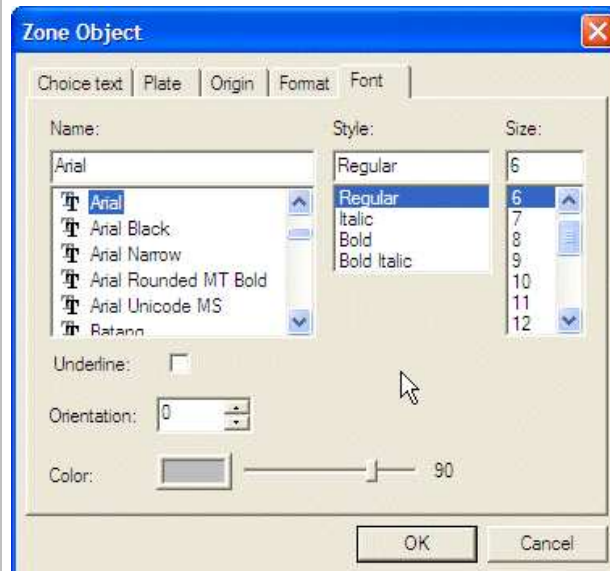
From the **Format** tab, you can set the alignment of text, the distance between lines (for text that spans more than one line) and the size of tab spaces, for text with tabs.



The line spacing is relative to the font size, but can be changed to an exact measurement by selecting **Exact** from the **Line Spacing** list, and typing a value for the distance between lines.

Font

From the **Font** tab, you can select font type, orientation of the font and color.



This shows a black plate (for B&W printing) with very light color chosen. The alternative is to place text outside the response shape. [More information on blind colors](#)

[Top](#)