



Working with Graphics

[Preparing your Workspace](#)

[Creating Graphic Objects](#)

[Lines](#)

[Rectangle](#)

[Ellipse](#)

[Text](#)

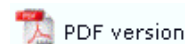
[Barcode](#)

[Picture](#)

[Constrained Handprint](#)

[Arranging Graphic Objects](#)

Graphic Objects - Barcodes




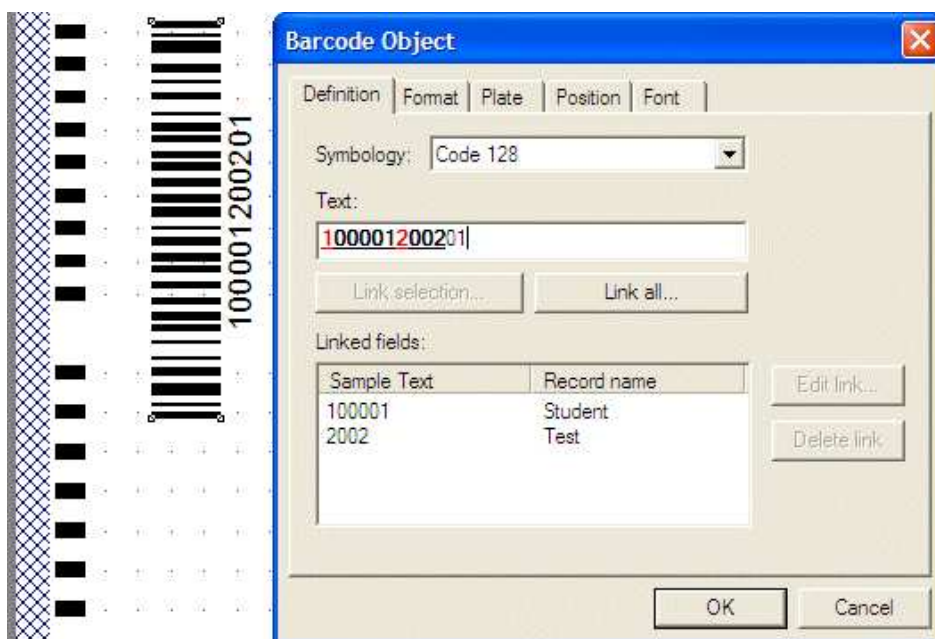
Barcodes are useful when your scanner has a barcode reader. For most scanners, barcodes must be printed so that their lines are at right angles to the long edge of the form (i.e. ladder format on a portrait page).

Like text objects, barcodes can either have a fixed value or a value linked with a record in a data file and merged when the form is printed.

For example, if you have a file containing a series of numbers you wish to encode as barcodes on your forms, you can create a single barcode object and instruct FoD-OMR to extract the data for that barcode from the data file. Before linking to information in a data file, you need to set up the data file fields (where the data in the file can be found). More information on linking to data in files can be found in [Merging data from files](#).

Adding barcodes

To add a barcode object to a form, select the **Barcode**  tool button and draw the frame on the form. When you have sized the barcode frame, the Barcode Object dialog box opens.



For from-Image forms, barcodes can be in either orientation. Barcodes are the optimum method for identifying data from scanned sheets and should be used in preference to OMR preslugging. This barcode includes the student id, test being given and the test sitting.

[Top](#)

Definition

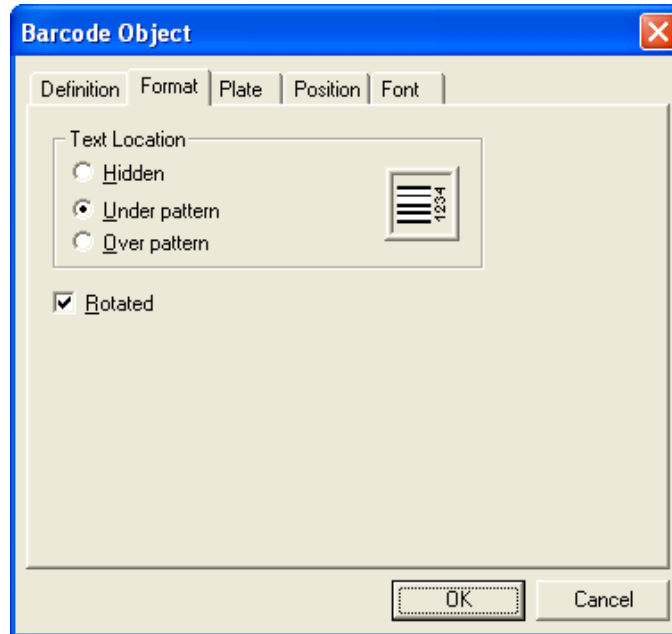
From the Definition tab, you can select the **Symbology** from the encoding styles in the list, and in the **Text** box, type the value represented by the barcode. You will need to check that the symbology chosen is valid for your reader and check the density of the finished barcode.

Before the barcode is created, the encoding value is formatted according to the barcode symbology. If your **Text** value cannot be encoded by the selected symbology (for example, letters cannot be encoded by 'Code 2 of 5'), the barcode object is not created.

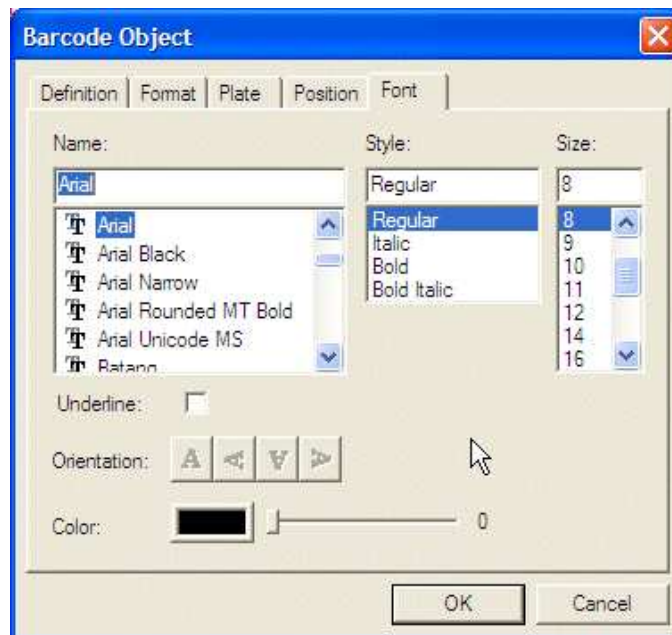
[Top](#)

Format and Font

From the **Format** tab, you can select whether to display the text value of the barcode, the text position, and the orientation of the barcode.



If you display the text, you can set the font style from the **Font** tab.



[Top](#)