



## Working with Graphics

[Preparing your Workspace](#)
[Creating Graphic Objects](#)
[Lines](#)
[Rectangle](#)
[Ellipse](#)
[Text](#)
[Barcode](#)
[Picture](#)
[Constrained Handprint](#)
[Arranging Graphic Objects](#)


## Graphic Objects - Constrained Handprint



Constrained Handprint fields are used to collect hand-written characters and are used on from-Image forms and on the latest generation of OMR readers with Image capability. The reading solutions have error rates of around 3% on numeric data and 10% on alpha-numeric data, although this can be improved via check digits, check sums and totaling, which are highly recommended.

### Adding Handprint

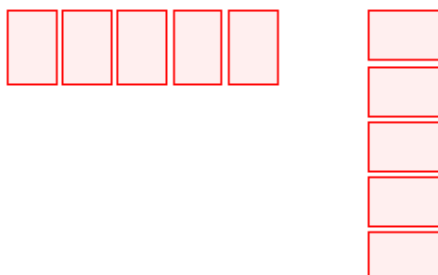
Handprint fields collect a fixed number of digits, in a "constraining" box and are printed in the "blind" color for the scanner.

To draw a Handprint field, press the Handprint icon , draw the frame for the handprint field, and complete these values in the **Settings** tab of the **Constrained Handprint** window:

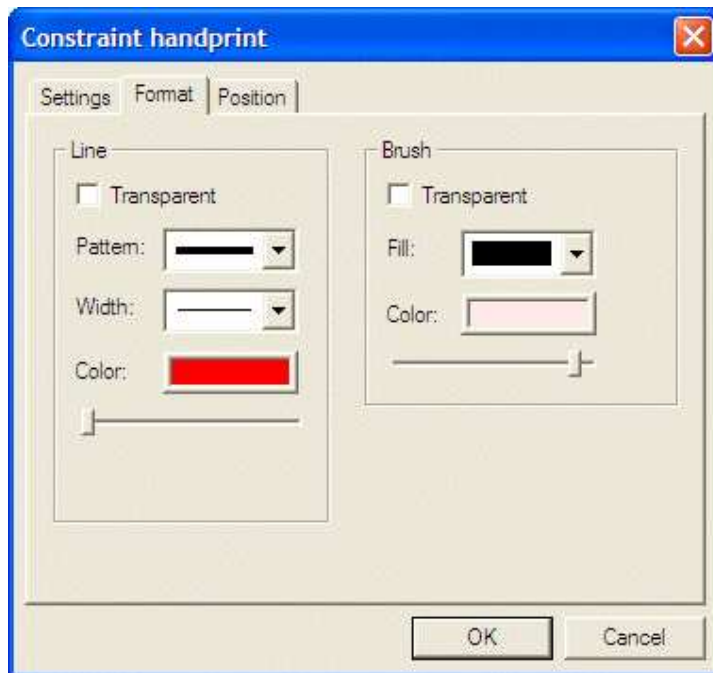
**Number of characters** is how many boxes are drawn in the finished field.

**Width, Height** and **Gap** provide the box dimensions (and are copied from the last values, but can be changed).

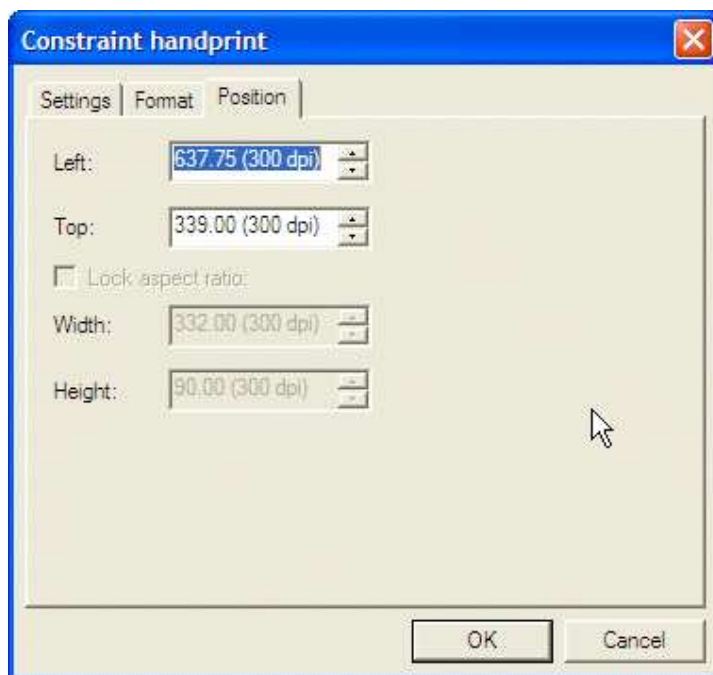
**Orientation** draws the boxes across or down the page, see below.



**Format** tab allows Line and Brush setting to be defined.



**Position** tab allows the location to be specified.



Top