



Working with Graphics

[Preparing your Workspace](#)

[Setting Object Grid](#)

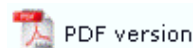
[Nudge Distance](#)

[Adjusting the Zoom](#)

[Creating Graphic Objects](#)

[Arranging Graphic Objects](#)

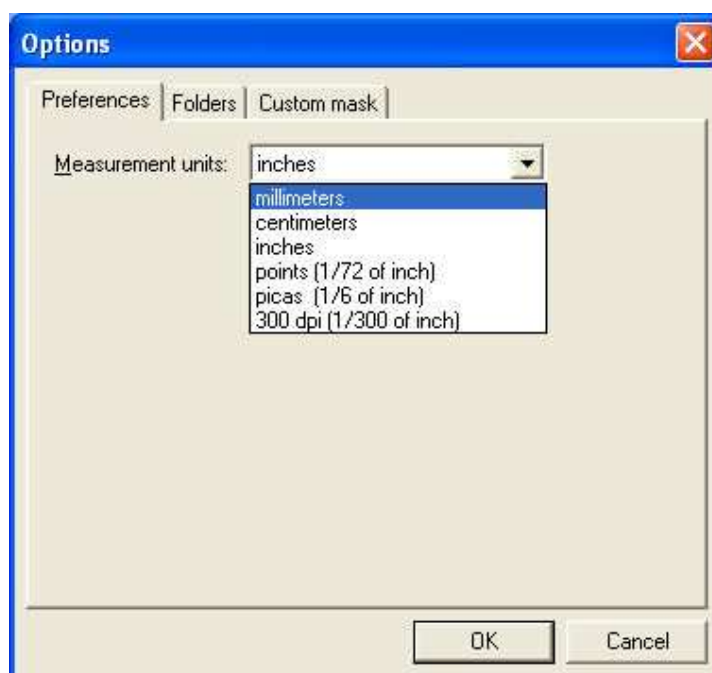
Working with Graphics



There are a number of graphic elements in FoD-OMR that will allow you to design your form.

Preparing your workspace via Options

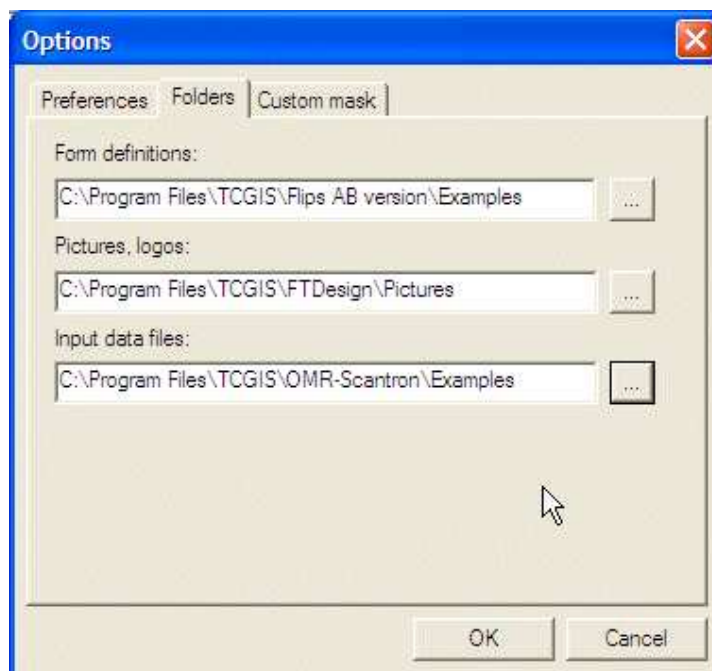
Before beginning a form design session, it is recommended you set up your workspace to help you with form design. **Tools, Options** provides this facility, with **Preferences** tab providing access to preferred **Measurement units**.



Select your preferred measurement from the **Measurement units** list.

For fine design, we prefer 1/300th of an inch measurement.

Folder gives access to the standard paths for Forms, Pictures and Logos and Data files where you are populating your OMR forms with data.



Custom masks provide for setup and maintenance of any standard masks, used for incoming data presentation, and are discussed in that section, see [Custom Masking](#).

[Top](#)