



FTDesign Manual V7.5

Theory & Decisions | Tools & Options | Printline or Records mode
Design & Objects | Masking & Font Change | Projects | Testing & Viewing
 Repaginator | FTSplitDef | Registry Update | Special Forms

Design & Objects

- ▶ Designing a Static Form
- ▶ Designing a Dynamic Form

Objetcs

- [-] Creating Objects
 - ▶ Line
 - ▶ Rectangle
 - ▶ Ellipse and Circle
 - [-] Image
 - [-] Text
 - [-] Barcode
 - ▶ Linking to a Field
 - ▶ **Barcode Substitution**
 - ▶ EAN/UPC-128, PDF 417 & Aust DPIIP
 - ▶ Print Rules for an Object
- ▶ Deleting Objects
- [-] Arranging Objects

Page Elements

- [-] Creating Page Elements
- ▶ Deleting Page Elements
- [-] Arranging Page Elements

Creating Objects - Barcode - Linking to a Field

Barcode substitutions are almost never used, however are possible using the same instructions as text objects.

More information on Image Substitution

More information on Text Substitution

The substitution is the external file that is opened by FormTrap at run time. Any information in the file will be inserted onto the form using the formatting and alignment applied to the substitution object.

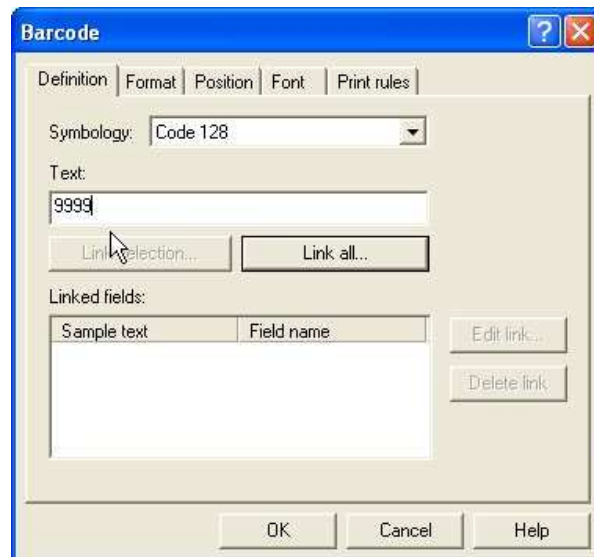
More information on Substitution Location

[Top](#)

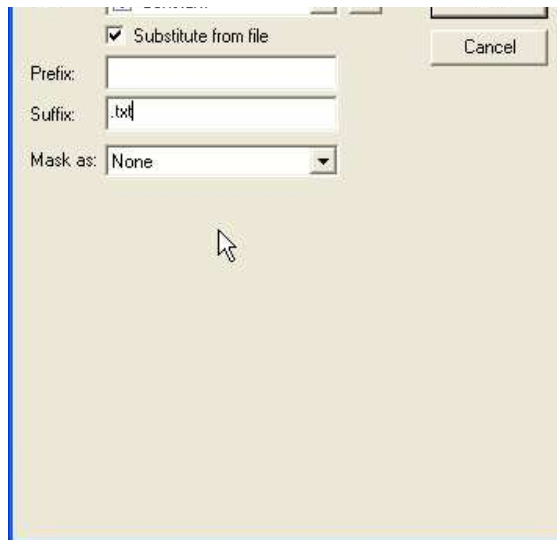
Constant Barcode Substitution

To insert a constant substitution barcode object:

- Double click on the barcode object created.
- On the **Definition** tab, enter the name of the substitution file into the text box.



- Click the **Link all...** button to link the sample barcode digits to the substitution file.
- In the **Link to field** dialog box:
 - Check the **Substitute from file** check box.
 - Select **Constant** from the **Field** drop down menu.
 - Leave the remainder blank and select **None** for **Mask as**.



- Click the **OK** button.
- In the example below FormTrap will open 9999.txt and insert information from the file onto the form using the formatting and alignment applied to the substitution barcode object.

More information on Substitution Location



At run-time, the constant substitution barcode object will insert the data from the substitution text file.



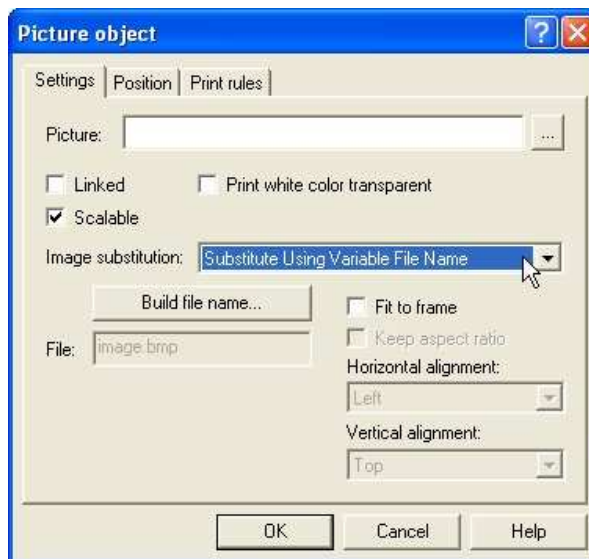
The data from the text files will appear on the print out of the form, using the format and alignment applied to the substitution barcode object.

[Top](#)

Variable Barcode Substitution

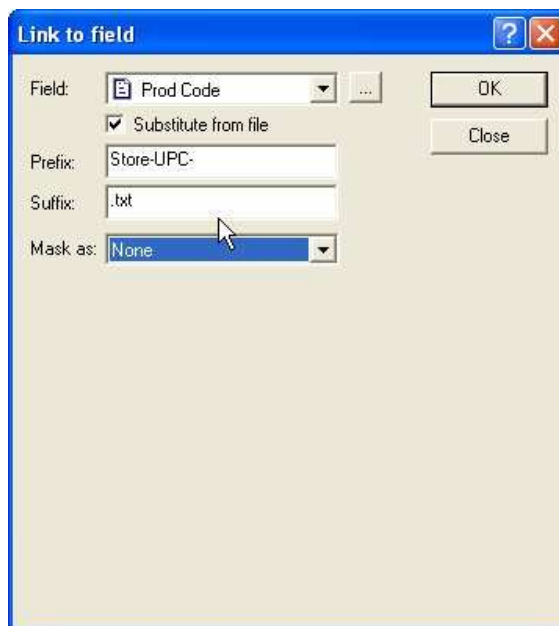
To insert a variable substitution barcode object:

- Double click on the barcode object created.
- On the **Definition** tab, enter sample barcode digits into the text box. It is best to make the sample barcode digits the same length as the field extracted from the substitution file.



- Click the **Link all...** button to link the sample barcode digits to the record variable.

- Enter the prefix of the variable substitution files into **Prefix** e.g. barcode-
- Enter the extension of the variable substitution files into **Suffix** e.g. .txt (including the dot).



- Click the **OK** button.
- In the example below FormTrap will open barcode-987654321.txt and insert information from the file onto the form using the formatting and alignment applied to the substitution barcode object.

Note on the File Name: The linked "field" portion of the file name is automatically left and right stripped of spaces

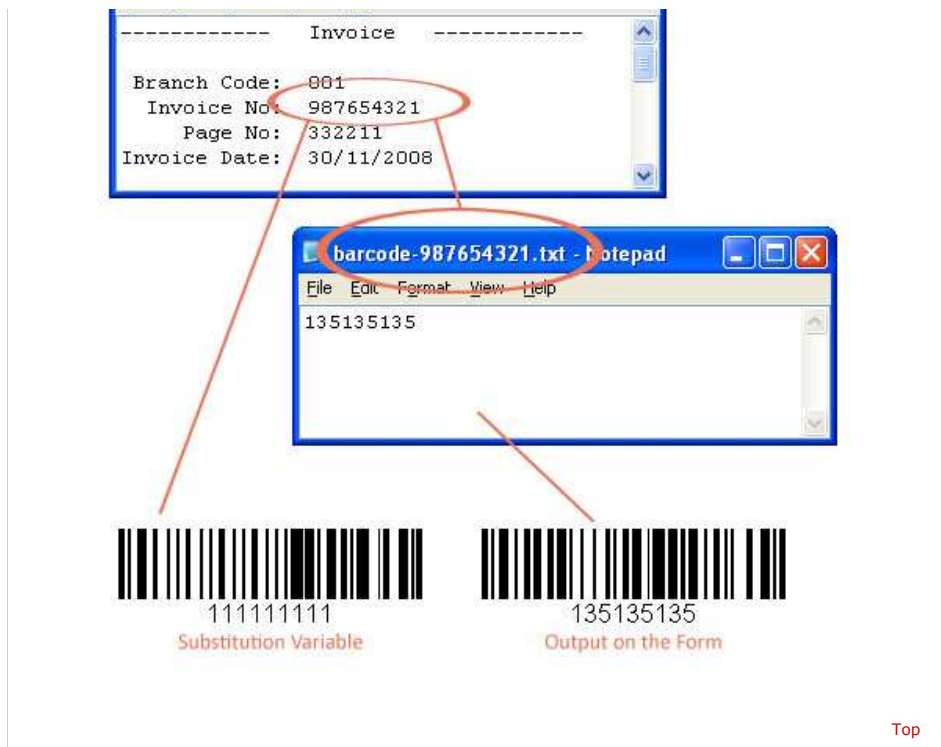
Field content (>field<) File Name Accessed

> 987654321 < barcode-987654321.txt

> 987654321 < barcode-987654321.txt

>987654321 < barcode-987654321.txt

More information on Substitution Location



[Disclaimer](#) | [Home](#) | [About Us](#) | [News](#) | [Products](#) | [Customers](#) | [Free Trial](#) | [Contact Us](#) | [Success Stories](#)

Copyright © 1995-2011 TCG Information Systems Pty. Ltd. All rights reserved.