



FTDesign Manual V7.5

Theory & Decisions | Tools & Options | Printline or Records mode
Design & Objects | Masking & Font Change | Projects | Testing & Viewing
 Repaginator | FTsplitDef | Registry Update | Special Forms

Design & Objects

- ▶ Designing a Static Form
- ▶ Designing a Dynamic Form

Objctcs

- [-] Creating Objects
 - ▶ Line
 - ▶ Rectangle
 - ▶ Ellipse and Circle
 - [-] Image
 - [-] Text
 - ▶ Linking to Field
 - ▶ Text Substitution
 - ▶ Associated File Text Objects
 - ▶ **Symbol Characters**
 - [-] Barcode
 - ▶ Print Rules for an Object
- ▶ Deleting Objects
- [-] Arranging Objects

Page Elements

- [-] Creating Page Elements
- ▶ Deleting Page Elements
- [-] Arranging Page Elements

Creating Objects - Symbol Characters

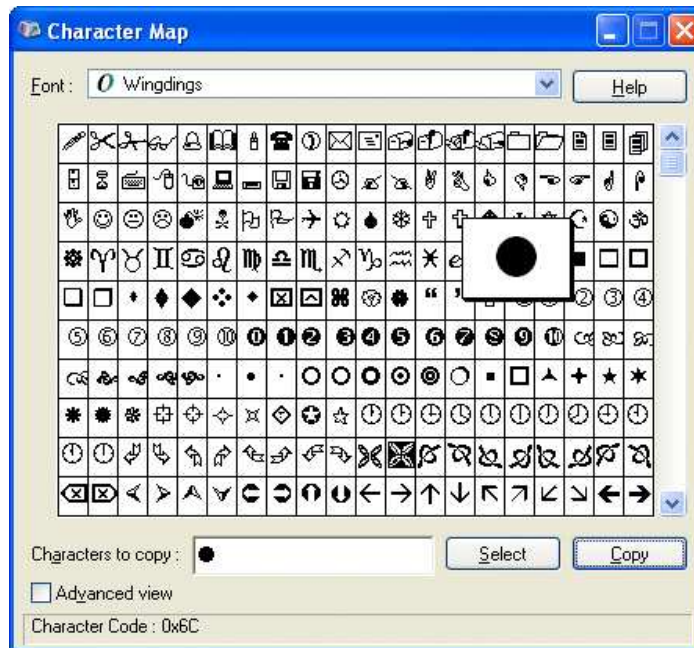
To add a symbol character in FTDesign:

Copy Symbol in Character Map

- Open Windows Character Map. Select **Start Menu > Run >** and type "charmap".



- Click OK.

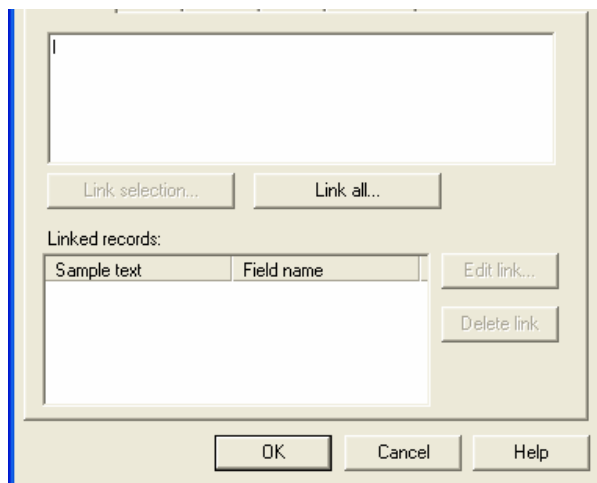


- In Character Map mark the required symbol and press Select, then Copy.

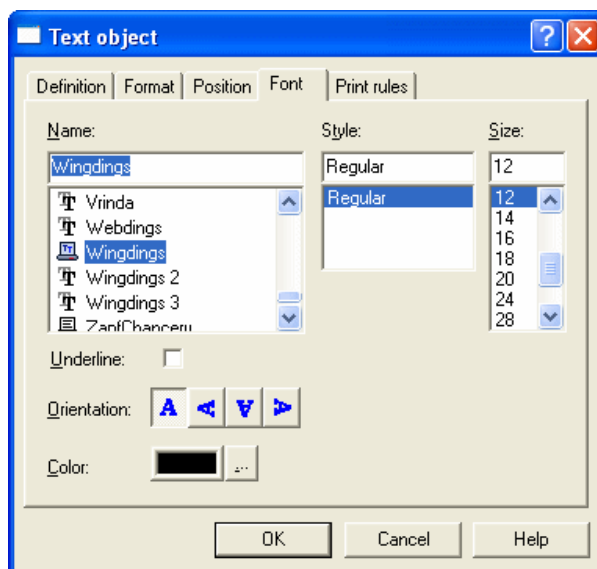
[Top](#)

Insert Symbol in FTDesign

- Create a new text object.
- Paste (CTRL + V) the symbol in the definition tab.



- On the Font tab, select the same font as was used in Character Map.



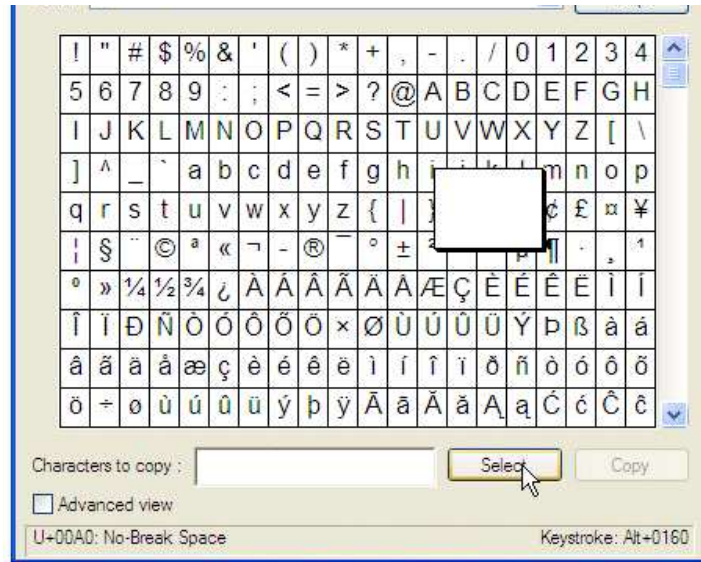
- Click OK.

Note: The character may not appear correctly in the definition tab, nor on the form design, but will print correctly.

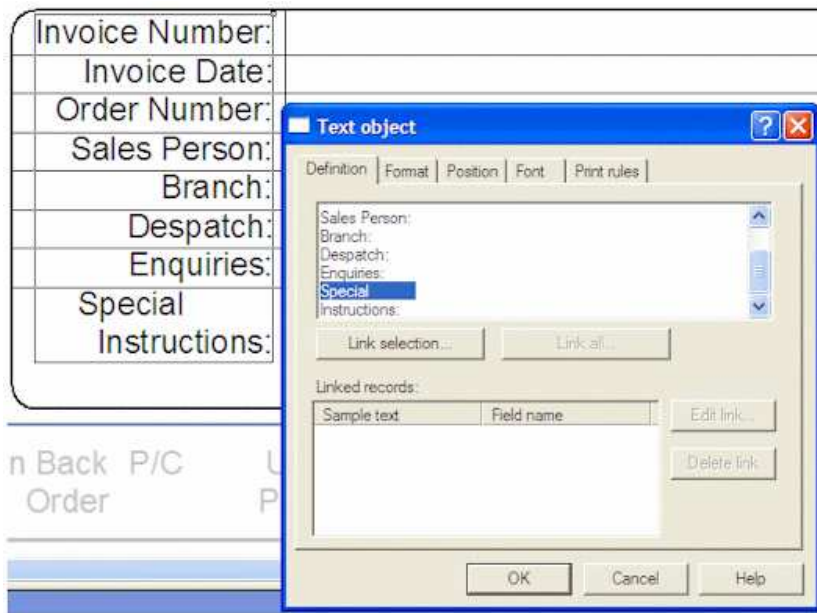
[Top](#)

Using the Non-Breaking Space to "Push" Right-Aligned Text to the Left

You can insert non-breaking spaces behind a text object to "push" a right-aligned object to the left. The Character Map symbol is Hex A0 (decimal 160) and should be selected prior to selecting **Copy**.



This is the FTDesign text object showing trailing non-breaking spaces inserted behind "Special" (using Ctrl+V) to give the effect shown in the text behind the window.



Top