



FTDesign Manual V7.5

Theory & Decisions | Tools & Options | Printline or Records mode
Design & Objects | Masking & Font Change | Projects | Testing & Viewing
 Repaginator | FTSplitDef | Registry Update | Special Forms

Design & Objects

- ▶ Designing a Static Form
- ▶ Designing a Dynamic Form

Objetcs

- [-] Creating Objects
 - ▶ Line
 - ▶ Rectangle
 - ▶ Ellipse and Circle
 - [-] Image
 - [-] **Text**
 - ▶ Linking to Field
 - ▶ Text Substitution
 - ▶ Associated File Text Objects
 - ▶ Symbol Characters
 - [-] Barcode
 - ▶ Print Rules for an Object
- ▶ Deleting Objects
- [-] Arranging Objects

Page Elements

- [-] Creating Page Elements
- ▶ Deleting Page Elements
- [-] Arranging Page Elements

Creating Objects - Text

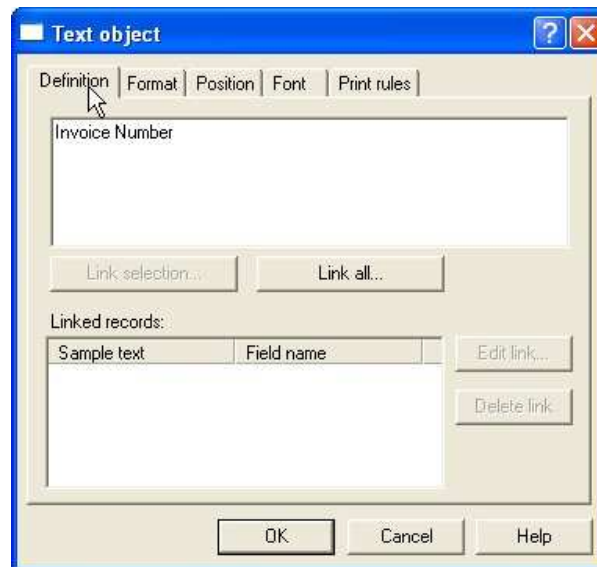
T The **Text tool** is used to insert a constant or variable text object.


[Top](#)

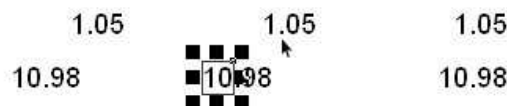
Creating Text Objects

To insert a text object:

- Choose **Text** from the **Draw** menu or click the **Text tool** button on the toolbar. The cursor changes to a cross-hair pointer.
- Click and drag the mouse diagonally to add the text frame.
- Release the mouse button and the **Text** dialog box will open.
- On the **Definition** tab, enter the desired text into the text area to create a constant text object. Click the **Link selection** or **Link all** button to **define a variable text object**. This object will "import" data from a field in the data file.



- On the **Format** tab, set the attributes of the constant text object:
 - **Alignment** - alignment of text within the text frame. Using decimal alignment as an example, which is often applied on numeric text objects,
 - Select the **Decimal** option for the **Horizontal Alignment** of the two text object to be aligned.
 - Select the **Right** alignment tool  on the alignment toolbar.
 - Click on the "." (dot) of the first object.
 - The second object decimal aligns itself to the "." (dot) of the first object.



Note: to "push" a right aligned object a controlled distance to the left, see [Symbol Characters](#)

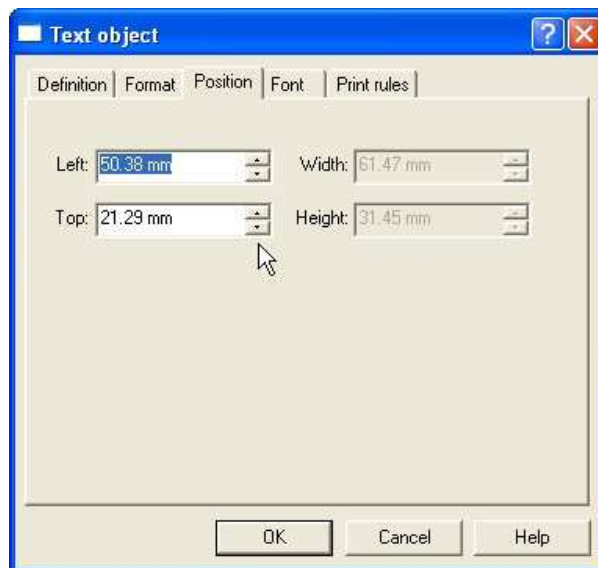
- **Line spacing** - for multi-line text objects, select a fixed spacing or enter a custom line spacing. To enter a custom line spacing, select **Exact** from the **Type** menu and then enter a value in the **Exact** text box.
- **Word wrap** - for a multi-line text object, check the **Word wrap** box to wrap

Note: The position at which the text word-wraps is defined by the size of the text frame which you can reset by moving the handles.

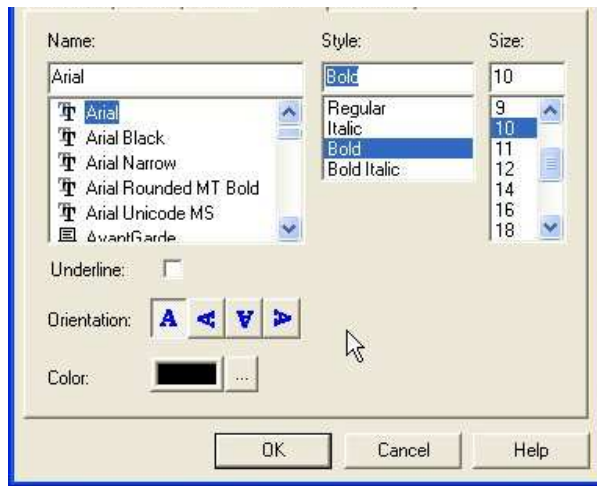
- **Remove empty variable lines** - remove blank lines from the variable data. For example, if a set address lines is missing line 2, the blank line is suppressed at runtime.
- **Remove superfluous spaces** - removes embedded multiple spaces in the completed object, ideal for concatenation of multiple data fields, such as suburb, post code (zip-code) and state.



- On the **Position** tab, set the position of the constant text object. Enter a value in **Left**, for the object's offset from left value and **Top**, for the object's offset from top value.



- On the **Font** tab, set the attributes of the font used for the constant text object:
 - **Name** - select the font type.
 - **Style** - font can be Regular, Bold, Italic or Bold Italic.
 - **Size** - select the size of the font.
 - **Underline** - check the Underline box for the text to be underlined.
 - **Orientation** - orientation of the text relative to the page.
 - **Color** - select the color of the text.



The Print rules tab allows conditions to be set for printing of this object, see [Print Rule for an object](#).

[Top](#)

[Disclaimer](#) | [Home](#) | [About Us](#) | [News](#) | [Products](#) | [Customers](#) | [Free Trial](#) | [Contact Us](#) | [Success Stories](#)

Copyright © 1995-2011 TCG Information Systems Pty. Ltd. All rights reserved.