



## FTDesign Manual V7.5

[Theory & Decisions](#) | 
 [Tools & Options](#) | 
 [Printline or Records mode](#)  
[Design & Objects](#) | 
 [Masking & Font Change](#) | 
 [Projects](#) | 
 [Testing & Viewing](#)  
[Repaginator](#) | 
 [FTSplitDef](#) | 
 [Registry Update](#) | 
 [Special Forms](#)

[Full PDF Manual](#)  
[Enterprise V7.5 Manual](#)  
[SBE V7.5 Manual](#)

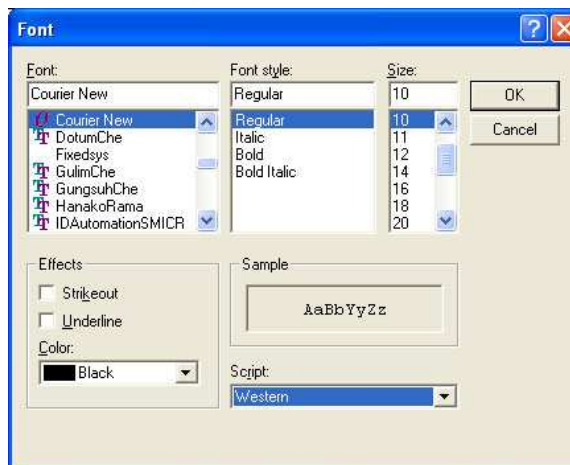
### FTSplitDef

- ▶ Overview
- ▶ Loading a Data File
- ▶ Entry
- ▶ Rules
- ▶ Options
  - ▶ **Font**
    - ▶ Preferences
    - ▶ Split Options
- ▶ Splitting
- ▶ Examples

#### Font Options

The attributes of the font used for the sample data file is set in the **Font Options**.

- Choose **Font** from the **Options** menu. Only fixed width fonts are shown.
- In the **Font** dialog box,
  - **Font** - select the font type. **Courier New** is ideal.
  - **Font Style** - select Regular (Bold, Italic and Bold Italic are unsuitable).
  - **Size** - select the size of the font.
  - **Effects** - leave as not Underlined.
  - **Color** - select the color of the text.
  - **Script** - select Western from FTDesign version 6.4 forward (Unicode).



[Top](#)

[Disclaimer](#) | 
 [Home](#) | 
 [About Us](#) | 
 [News](#) | 
 [Products](#) | 
 [Customers](#) | 
 [Free Trial](#) | 
 [Contact Us](#) | 
 [Success Stories](#)

Copyright © 1995-2011 TCG Information Systems Pty. Ltd. All rights reserved.