



PDF version

FTDesign Manual V7.5

Theory & Decisions | Tools & Options | Printline or Records mode
 Design & Objects | Masking & Font Change | **Projects** | Testing & Viewing
 Repaginator | FTSplitDef | Registry Update | Special Forms

Projects

- ▶ Overview
- ▶ **Create a Project**
- ▶ Project Settings
- ▶ Building the Load (.asc) File

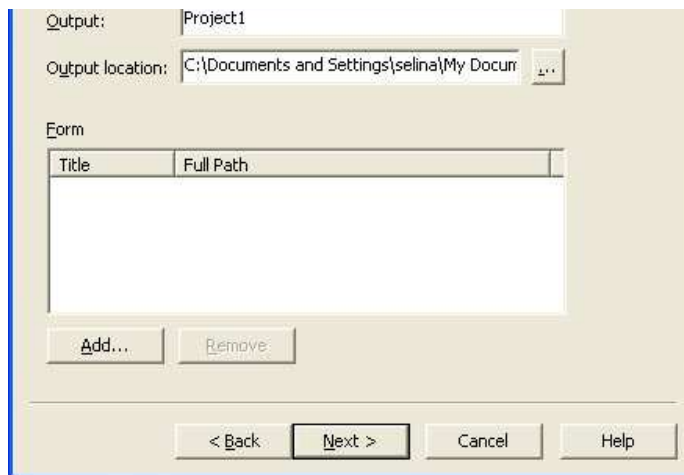
Create a New Project

To create a new project:

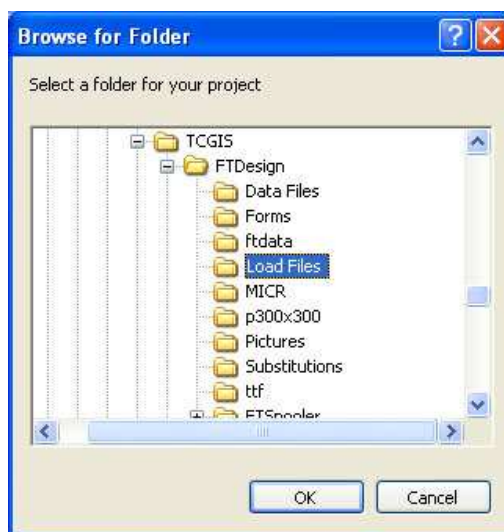
- Select **New Project** from the **File** menu. **Project Definition wizard** is launched.
- Enter an appropriate name in the **Project name** text box.

- Click the browse "..." button to locate the project. The default **project file location** is defined in **Design Options, Folders** tab.

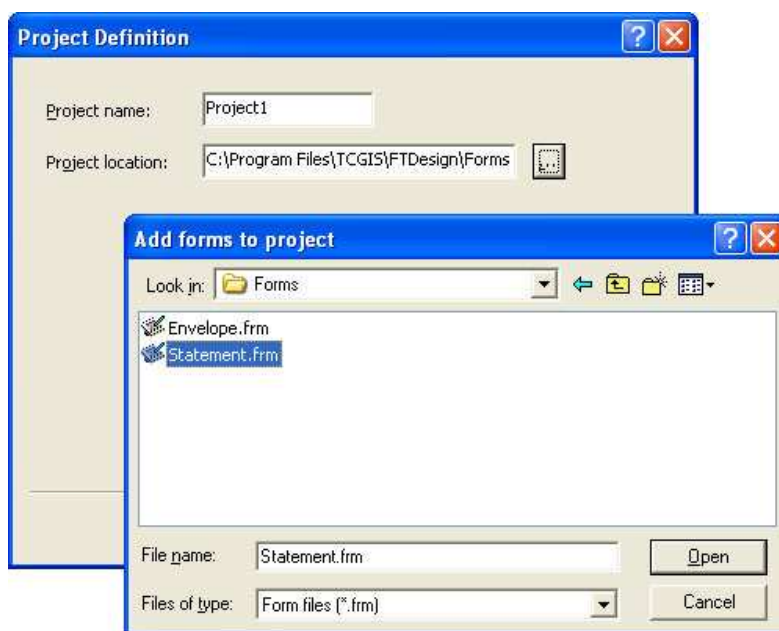
- Click the **Next** button to continue.
- Enter a name for the load (.asc) file in the **Output** text box. By default it carries the same name as your project.



- Click the browse "... " button to locate the load (.asc) files when they are created by the build process. The default **load files location** is defined in **Tools, Options, Folders** tab.



- To add one or more existing forms to the project:
 - Click the **Add** button and browse to the forms' location.
 - Select the form(s) you wish to add to the project. Select multiple forms by clicking each of them while holding down the CTRL key.
 - Click **Open**.



- Click **Finish** to complete the project definition.

[Top](#)

[Disclaimer](#) | [Home](#) | [About Us](#) | [News](#) | [Products](#) | [Customers](#) | [Free Trial](#) | [Contact Us](#) | [Success Stories](#)

Copyright © 1995-2011 TCG Information Systems Pty. Ltd. All rights reserved.