



FTDesign Manual V7.5

[Theory & Decisions](#) |
 [Tools & Options](#) |
 [Printline or Records mode](#)
[Design & Objects](#) |
 [Masking & Font Change](#) |
 Projects |
 [Testing & Viewing](#)
[Repaginator](#) |
 [FTSplitDef](#) |
 [Registry Update](#) |
 [Special Forms](#)

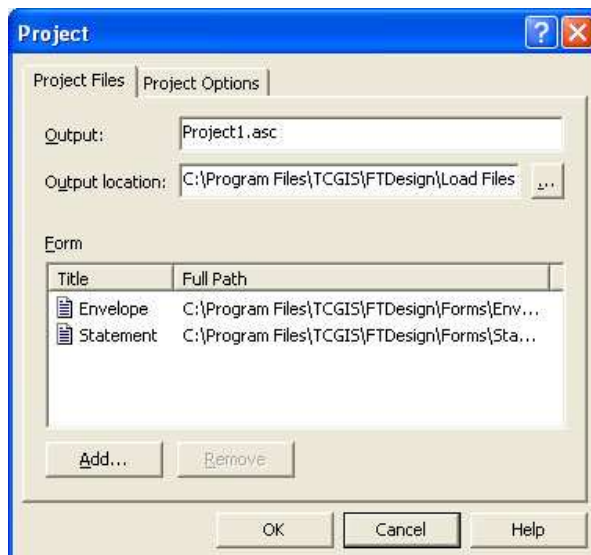
Projects

- ▶ Overview
- ▶ Create a Project
- ▶ Project Settings
 - ▶ **Project Files**
 - ▶ Project Options
- ▶ Building the Load (.asc) File

Project Files

To edit a Project:

- Choose **Settings** from the **Project** menu or click the **Project Properties tool** button on the project toolbar. The **Project** dialog box opens.



- On the **Project** tab:
 - Modify the name of the load (.asc) file in the **Output** box.
 - Modify the location of the load (.asc) file in the **Output location** box.
 - Click the **Add** button to add a form to the project. Alternatively, choose **Add files** from the **Project** menu, or click the **Add files to project tool** button on the project toolbar.
 - Select an unwanted form and click the **Remove** button to delete the form from the project. Alternatively, click the **Remove files tool** button on the project toolbar to delete highlighted form(s).

To add a new form to the project:

- Select **New form** from the **Project** menu.
- Choose the **Extract mode** and click **OK**.
- On the **Save As** dialog box, give the new form a name and click the **Save** button.
- The new form is now part of the project.

[Top](#)