



PDF version

## FTDesign Manual V7.5

Theory & Decisions | **Tools & Options** | Printline or Records mode  
 Design & Objects | Masking & Font Change | Projects | Testing & Viewing  
 Repaginator | FTSplitDef | Registry Update | Special Forms

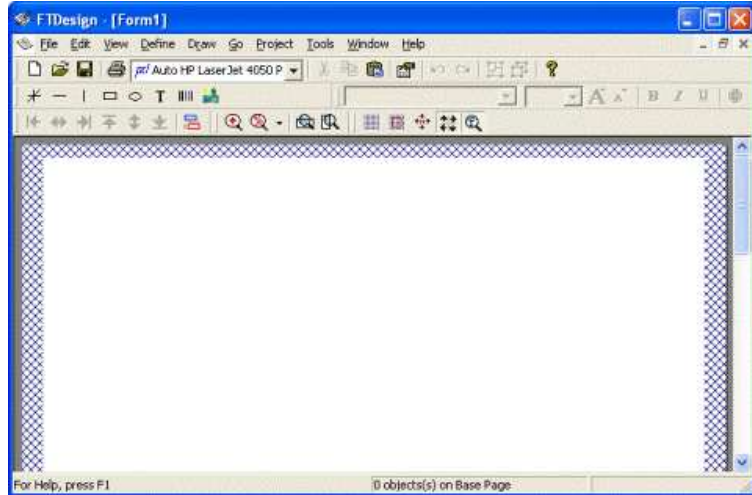
### Tools & Options

#### Design Window

- ▶ Using the Zoom Tools
- ▶ Using the Grid Tools
- Design Options

#### Design Window

When you launch FTDesign, you are presented with a blank workspace. The workspace is the area in which all your form design takes place. This includes placing all your graphic and text objects, variable and constant. FTDesign is a windows environment, so everything appears in your workspace exactly as it does on the final output.



The blue cross-hatched area around the edges of your workspace represents the unprintable area of the page and can be customized as part of the Base page preferences.

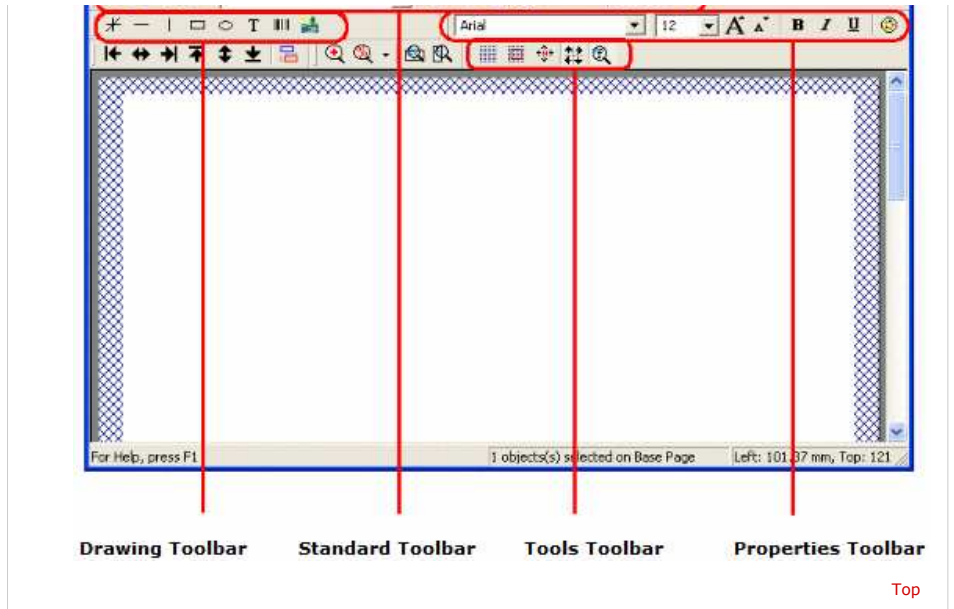
#### Design Window

**Standard toolbar** contains the options common in most Windows programs such as file saving, printing and opening.

**Drawing toolbar** contains the tools used to create the objects that make up the framework of your form design including text, lines, boxes, ellipses, images and barcodes.

**Properties toolbar** contains the tools used to modify the properties of the objects that make up the framework of your form design including text, lines, boxes, ellipses, images and barcodes.

**Tools toolbar** contains icons for all of the special formatting tools used to make the form design process easy, fast and accurate.



[Disclaimer](#) | [Home](#) | [About Us](#) | [News](#) | [Products](#) | [Customers](#) | [Free Trial](#) | [Contact Us](#) | [Success Stories](#)

Copyright © 1995-2011 TCG Information Systems Pty. Ltd. All rights reserved.