



Special Forms

[Special Forms](#)
[CSV Output File](#)
[QAD Forms in Chinese](#)
[Multi-Page Forms](#)
[Personal Emails](#)
[Poster Printing](#)
[Contracts and Other Documents](#)
[Quantity Masking](#)
[Salutation Masking](#)
[Widow/Orphan Size](#)
[Writing Letters](#)
[Fax from your ERP System](#)

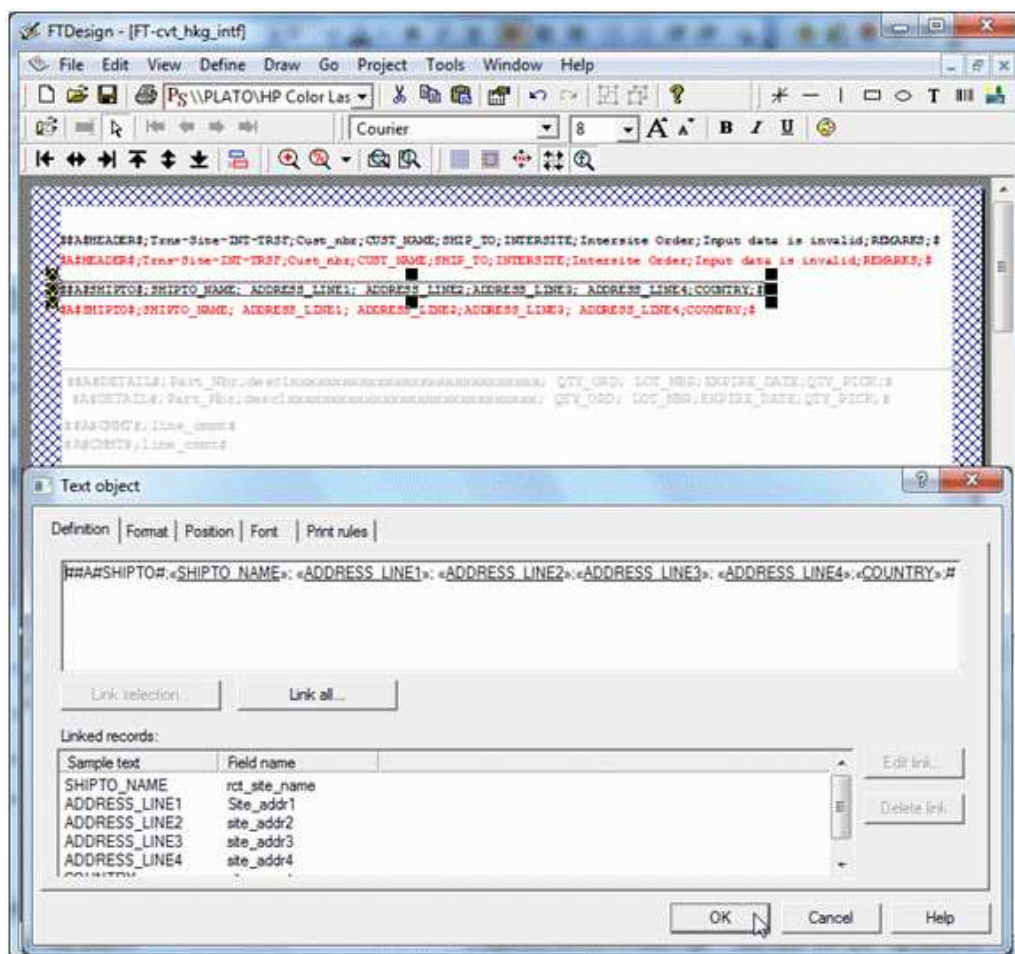
Special Forms

PDF version

CSV Output Files

Comvita (NZ Medical Honey company) use a third party fulfillment system in Hong Kong to fill orders and required an automated way to get the data from their QAD picking/invoicing systems to the third party. After discussion with TCG we designed a form to pass the data to their the third party computer fulfillment system using Separated Files produced from FormTrap.

You can output a CSV file using the Associated File command, like this:



Here we construct Associated File lines with all of the fields required, starting with the ; (semi-colon) separator (so this is strictly a semi-colon separated file). The same is done for the initial "Header" portion and for each of the Detail and Comment lines as well. The Red items are missing the initial #, hence print and are used for checking the output during testing. These are taken out for production (subsequent provision in FTDesign to look at the Associated File now makes the red lines redundant).

This is the output.

0	10	20	30	40	50	60	70	80	90	100	110	120	130
HEADER=308-06/04/2009: 302 :Department Store Counter : 302 :Department Store Counter :Interstate Order:08/02/2011:REMARKS:													
SHIFT=Department Store Counter : : TSUEN WAN : HONG KONG :													
DETAIL=311 :HUMI DAY SACH 1.5ML : 100.00:16075305 :28/02/2011: 100.00:													
DETAIL=312 :HUMI NIGHT SACH 1.5ML : 100.00:16070470 :28/03/2011: 100.00:													
DETAIL=363 :PROF LOZ L4H 500G : 18.00:15897299 :31/03/2011: 18.00:													
CMGT=Attach Product Label 5332C To Each Unit													
DETAIL=364 :PROF LOZ CMINT 500G : 4.00:3 :01/03/2011: 4.00:													
CMGT=Attach Product Label 5333C To Each Unit													
DETAIL=5348A :BAG BLK 39X34X10 PP : 20.00:104/05/2014: 20.00:													
DETAIL=5349A :BAG BLK 24X31X10 PP : 30.00:104/05/2014: 30.00:													
DETAIL=5351A :BAG 30X30X15 JUTE : 20.00:104/05/2014: 20.00:													
DETAIL=5356A :BOOK RITCHA OLIVE CHN : 20.00:104/05/2014: 20.00:													
DETAIL=860 :OMEGA 3 CAPS 75 : 12.00:15547457 :28/07/2010: 12.00:													
CMGT=Attach Product Label 5314A To Each Unit													
DETAIL=864 :HUMI CLEANSER SACH 1.5ML : 100.00:16075305 :28/02/2011: 100.00:													
DETAIL=865 :HUMI SERUM SACHET 1.5ML : 100.00:16075309 :28/02/2011: 100.00:													
DETAIL=866 :HUMI WHITING SACH 1.5ML : 100.00:16075310 :28/02/2011: 100.00:													
DETAIL=EXP112 :HON N4N 5+ 1KG : 36.00:16119880 :28/02/2014: 36.00:													
CMGT=Attach Product Label 5300A To Each Unit													
DETAIL=EXP170 :HON N4N 5LD 1KG : 12.00:1575702 :38/01/2014: 12.00:													
CMGT=Attach Product Label 5305A To Each Unit													
DETAIL=EXP373 :HON N4N 10+ 500G : 48.00:16111841 :28/01/2014: 48.00:													
CMGT=Attach Product Label 5301A To Each Unit													
HEADER=308-06/04/2009: 302 :Department Store Counter : 302 :Department Store Counter :Interstate Order:08/02/2011:REMARKS:													
SHIFT=Department Store Counter : : TSUEN WAN : HONG KONG :													
DETAIL=EXP477 :RJ CAPS 365 : 12.00:15854254 :28/06/2010: 12.00:													
CMGT=Attach Product Label 5310A To Each Unit													
DETAIL=EXP486 :RJ CAPS 40 : 12.00:15926003 :28/06/2010: 12.00:													
CMGT=Attach Product Label 5310A To Each Unit													
DETAIL=HN259 :PROF CAPS PFL15 365 NI : 12.00:15641956 :09/02/2013: 12.00:													
CMGT=Attach Product Label 5321B To Each Unit													

Spaces etc, can be removed if required by masking and there is no "maximum length" on the output.

Please note these two items:

1. Headings are best done on the Trailer label (i.e. you get one record per input document). Details will be produced as they occur so are in sequence. This document has no "trailer" so the Associated File records for Header and Trailer are duplicated further down.
2. The first character in the "detail" section must be the separator.

Top