



Submit Methods

Network
 Named Pipe
 LPR Printers

Submit Input Data for Job Processing

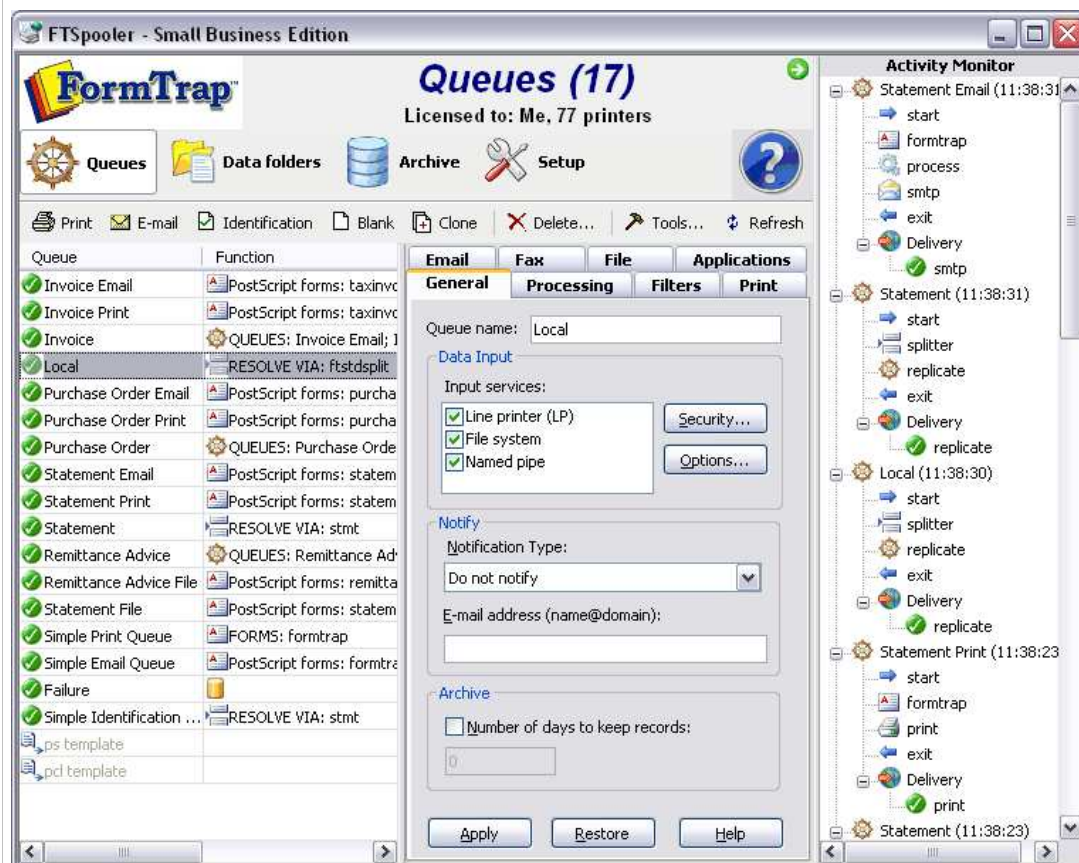


Once queues are created, you may produce and deliver FormTrap documents by submitting data to the queue input folder or named pipe or by printing to the line printer (TCP/IP printer). In addition you can drag and drop files with "*.txt" and "*.dat" extension to the FTSpooler main Window, and drop directly into the required queue.

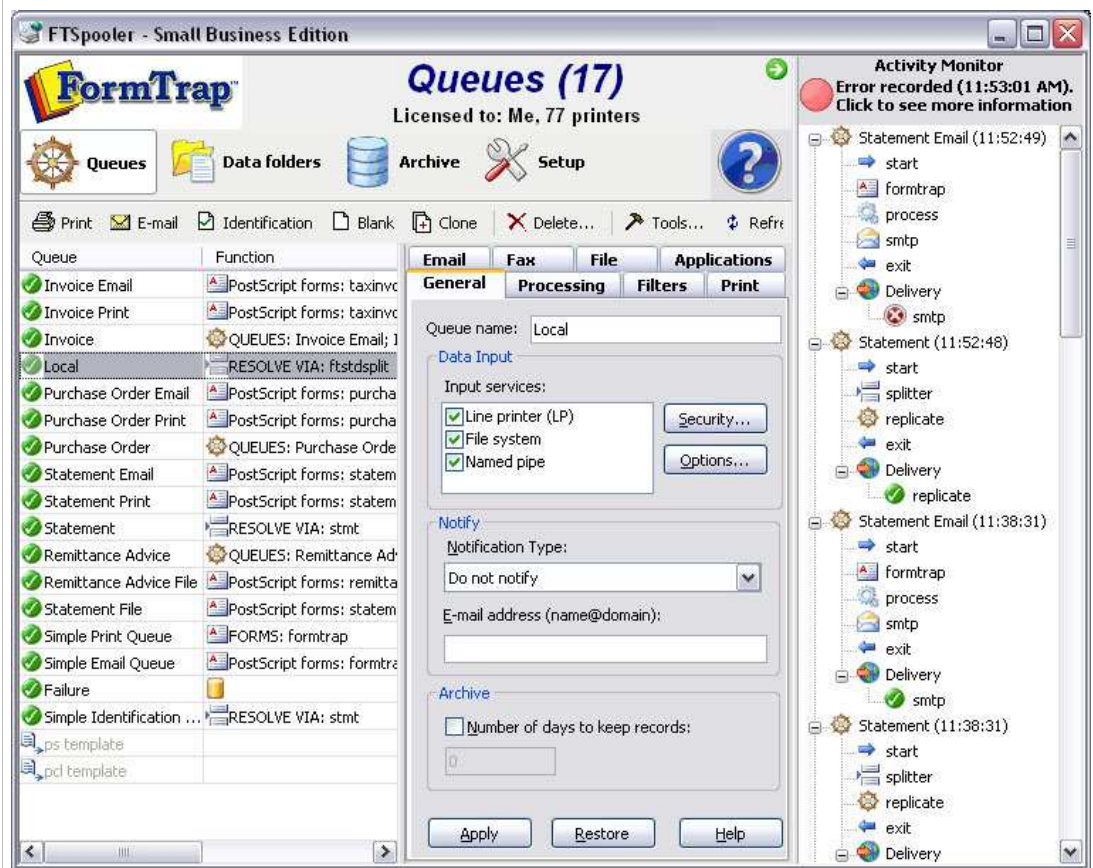
Activity Monitor

Activity Monitor shows the real-time job processing and delivery information, in brief, on the pop-up right hand side panel.

To minimize the monitor panel, click on the button.



A red light flashes indicating an error has occurred. Click to go to the Errors view of Archive for troubleshooting.



Top