

## SBE Manual V7.5

[Start](#) | 
 [Queues](#) | 
 [Data Folders](#) | 
 [Archive](#) | 
 [Setup](#) | 
 [Submit](#)  
[Associated Files](#) | 
 [Other Add-ons](#) | 
 [Related Batch Processes](#) | 
 [Special Forms](#)

### Data Folders

- ▶ [Manage Data Folders](#)
- ▶ [Manage Substitution Files](#)
- ▶ [Manage Split Rules Files](#)

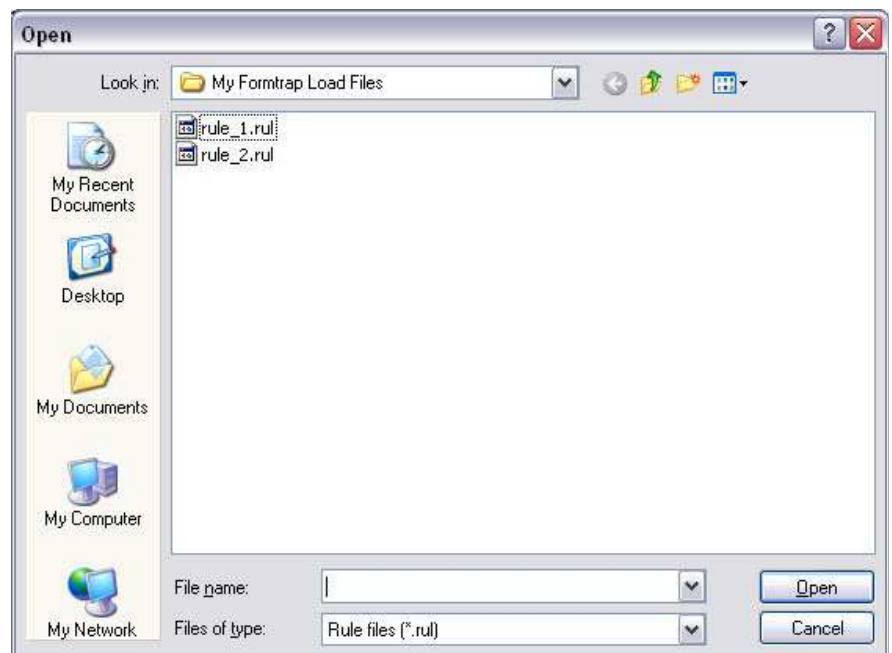
#### Manage Split Rule Files

The single Split Rules folder is at root level.

#### Add a Split Rule File

To add a Split Rule File:

- Select **Split Rules** in the tree structure.
- Click the **Add Split Rules** button.
- A dialog box pops up to allow you to add split rule file(s). Select the rule file(s) you wish to add and click **Open** to finish.

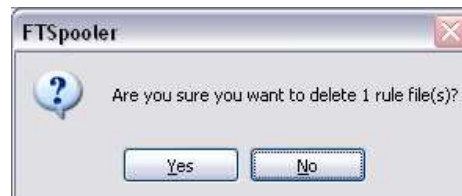


[Top](#)

#### Delete a Split Rule File

To delete a Split Rule File:

- Select the split rule file(s) you wish to delete under **Split Rules** in the tree structure.
- Click the **Delete** button.
- The dialog box pops up to confirm the deletion process. Click **Yes** to finish.



[Top](#)

[Disclaimer](#) | 
 [Home](#) | 
 [About Us](#) | 
 [News](#) | 
 [Products](#) | 
 [Customers](#) | 
 [Free Trial](#) | 
 [Contact Us](#) | 
 [Success Stories](#)

Copyright © 1995-2011 TCG Information Systems Pty. Ltd. All rights reserved.