



SBE Manual V7.5

[Start](#) | [Queues](#) | [Data Folders](#) | [Archive](#) | **[Setup](#)** | [Submit](#)
[Associated Files](#) | [Other Add-ons](#) | [Related Batch Processes](#) | [Special Forms](#)

[FTDesign Manual V7.2](#)
[I'm Stuck!](#)

Setup

- ▶ [Core Components](#)
- ▶ [Archive](#)
- ▶ [Settings](#)
- ▶ [Filters](#)
- ▶ [Run](#)

Data Input

- ▶ **[File System](#)**
- ▶ [LP \(Line Printer\)](#)
- ▶ [Named Pipes](#)

Delivery

- ▶ [Print Servers](#)
- ▶ [Printer Licensing](#)
- ▶ [Email](#)
- ▶ [Application](#)
- ▶ [Delivery Monitor](#)

File System

This option allows the user's application or a copy statement to write a file directly to the queue folder.

To configure the file system option:

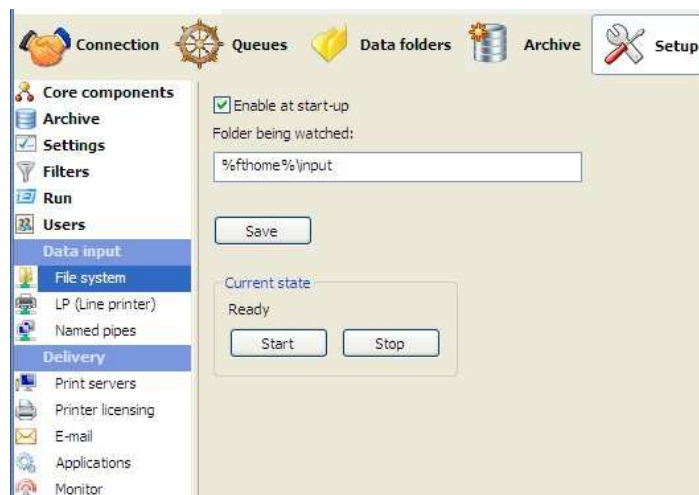
- Tick the **Enable at start-up** checkbox to enable the file system option at FTSpooler start-up.

You need to Stop and Start as below for this to take effect.

- Alter the location of the **Folder being watched** if required.
- Click the **Save** button.

Start or Stop and Start the service and check **Current state** is **Ready**.

More information on Submit Queue via Network



[Top](#)

[Disclaimer](#) | [Home](#) | [About Us](#) | [News](#) | [Products](#) | [Customers](#) | [Free Trial](#) | [Contact Us](#) | [Success Stories](#)

Copyright 1995-2011 TCG Information Systems Pty. Ltd. All rights reserved.