

SBE Manual V7.5

[Start](#) | [Queues](#) | [Data Folders](#) | [Archive](#) | **[Setup](#)** | [Submit](#)
[Associated Files](#) | [Other Add-ons](#) | [Related Batch Processes](#) | [Special Forms](#)

[FTDesign Manual V7.2](#)
[I'm Stuck!](#)

Setup

- ▶ [Core Components](#)
- ▶ [Archive](#)
- ▶ [Settings](#)
- ▶ [Filters](#)
- ▶ [Run](#)

Data Input

- ▶ [File System](#)
- ▶ [LP \(Line Printer\)](#)
- ▶ **[Named Pipes](#)**

Delivery

- ▶ [Print Servers](#)
- ▶ [Printer Licensing](#)
- ▶ [Email](#)
- ▶ [Application](#)
- ▶ [Delivery Monitor](#)

Named Pipes

This option allows the user to pipe data from their application to a queue, provided the application is able to directly use a pipe. FTSpooler generates a pipe called `\\ServerName\pipe\QueueName` (where ServerName is replaced with "." (dot) if writing from an application on the FormTrap server to the queue on the same machine).

To configure the named pipes options:

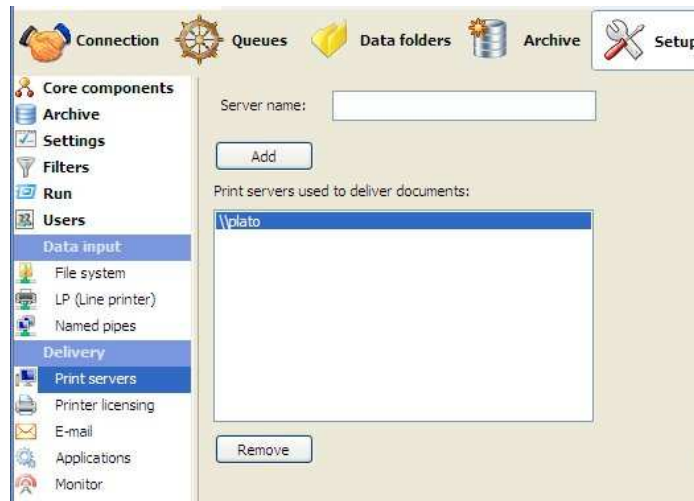
- Tick the **Enable at start-up** checkbox to enable pipes at FTSpooler start-up.

You need to Stop and Start as below for this to take effect.

- Enter the **Pipe prefix**.
- Press **Save**

Start or Stop and **Start** the service and check **Current state** is **Ready**.

More information on Submit Queue via Named Pipes



If you have other applications using pipes, you can prevent conflict by using more of the prefix to uniquely identify FormTrap pipes. In this case, consider a prefix of `\\.\pipe\ft-` to identify FormTrap pipes (`ft-` can be whatever you require). The final pipe name might be `\\.\pipe\ft-invoices`.

[Top](#)

[Disclaimer](#) | [Home](#) | [About Us](#) | [News](#) | [Products](#) | [Customers](#) | [Free Trial](#) | [Contact Us](#) | [Success Stories](#)

Copyright 1995-2011 TCG Information Systems Pty. Ltd. All rights reserved.