



PDF version

SBE Manual V7.5

Start | Queues | Data Folders | Archive | Setup | Submit
Associated Files | Other Add-ons | Related Batch Processes | **Special Forms**

FT
I'

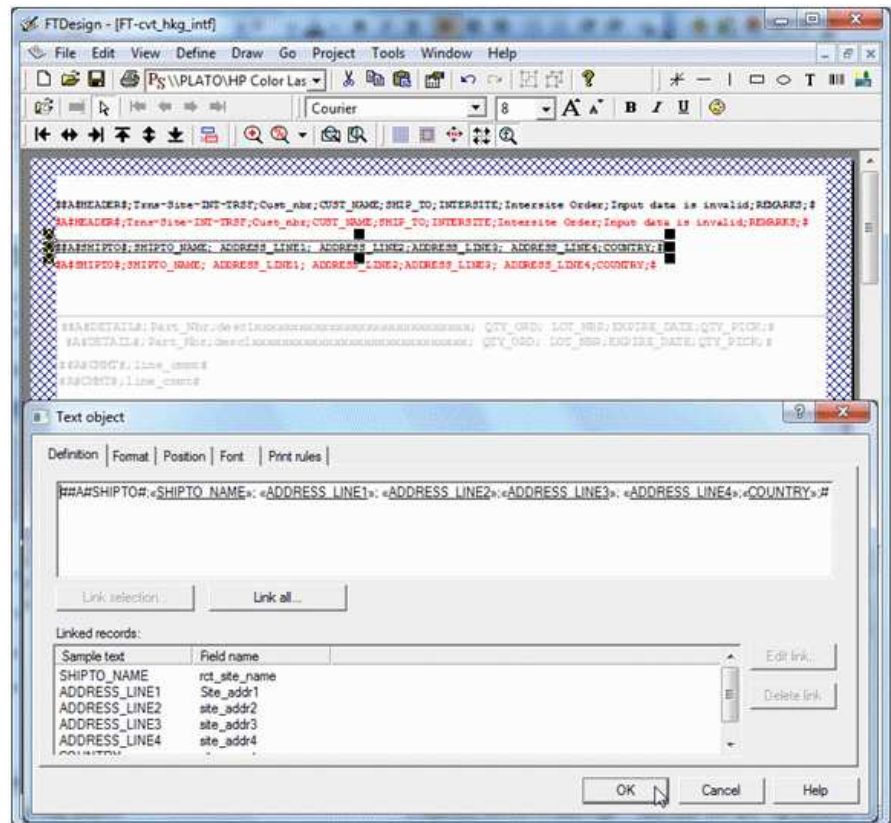
Special Forms

- ▶ Overview
- ▶ **CSV Output File**
- ▶ QAD Forms in Chinese
- ▶ Multi-Page Forms
- ▶ Personal Emails
- ▶ Poster Printing
- ▶ Contracts and Other Documents
- ▶ Quantity Masking
- ▶ Salutation Masking
- ▶ Widow/Orphan Size
- ▶ Writing Letters
- ▶ Fax from ERP Systems

Special Forms - CSV Output File

Comvita (NZ Medical Honey company) use a third party fulfillment system in Hong Kong to fill orders and required an automated way to get the data from their QAD picking/invoicing systems to the third party. After discussion with TCG we designed a form to pass the data to the third party computer fulfillment system using Separated Files produced from FormTrap.

You can output a CSV file using the Associated File command, like this:



Here we construct Associated File lines with all of the fields required, starting with the ; (semi-colon) separator (so this is strictly a semi-colon separated file). The same is done for the initial "Header" portion and for each of the Detail and Comment lines as well. The Red items are missing the initial #, hence print and are used for checking the output during testing. These are taken out for production (subsequent provision in FTDesign to look at the Associated File now makes the red lines redundant).

This is the output.

```

9      10      20      30      40      50      60      70      80      90      100      110      120      130
HEADER:308-04/04/2009; 302 ;Department Store Counter ; 302 ;Department Store Counter ;Intersite Order:08/02/2011;REMARKS;#
SHIPTO:Department Store Counter ; ; TSUEN WAN ; ;HONG KONG ;
DETAIL:311 ;HONI DAY SACH 1.SML ; 100.00;16078305 ;28/02/2011; 100.00;
DETAIL:312 ;HONI NIGHT SACH 1.SML ; 100.00;16070470 ;28/03/2011; 100.00;
DETAIL:363 ;PROP LOZ LAR 900G ; 18.00;15897299 ;31/03/2011; 18.00;
CMT:Attach Product Label 5330C To Each Unit ; 4.00;3 ;01/03/2011; 4.00;
DETAIL:364 ;PROP LOZ CHHT 500G ; 20.00;104/05/2014; 20.00;
CMT:Attach Product Label 5330A To Each Unit ; 12.00;1547457 ;28/07/2010; 12.00;
DETAIL:5348A ;BAG BLK 39X34X10 PF ; 30.00;104/05/2014; 30.00;
DETAIL:5349A ;BAG BLK 26X31X10 PF ; 20.00;104/05/2014; 20.00;
DETAIL:5351A ;BAG 30X30X15 JUTE ; 20.00;104/05/2014; 20.00;
DETAIL:5356A ;BOOK RITCHA OLIVE CHN ; 20.00;104/05/2014; 20.00;
DETAIL:860 ;OMEGA 3 CAPS 75 ; 100.00;16075305 ;28/02/2011; 100.00;
CMT:Attach Product Label 5314A To Each Unit ; 100.00;16075309 ;28/02/2011; 100.00;
DETAIL:864 ;HONI CLEANSER SACH 1.SML ; 100.00;16075310 ;28/02/2011; 100.00;
DETAIL:866 ;HONI WHING SACH 1.SML ; 36.00;16119880 ;28/02/2014; 36.00;
CMT:Attach Product Label 5300A To Each Unit ; 12.00;1575702 ;28/01/2014; 12.00;
DETAIL:EXP170 ;HON HAN BLD LRG ; 48.00;1411184 ;28/01/2014; 48.00;
CMT:Attach Product Label 5301A To Each Unit ; 12.00;15641956 ;09/02/2013; 12.00;
HEADER:308-04/04/2009; 302 ;Department Store Counter ; 302 ;Department Store Counter ;Intersite Order:08/02/2011;REMARKS;#
SHIPTO:Department Store Counter ; ; TSUEN WAN ; ;HONG KONG ;
DETAIL:EXP477 ;R7 CAPS 365 ; 12.00;15641956 ;28/06/2010; 12.00;
CMT:Attach Product Label 5310A To Each Unit ; 12.00;15626005 ;28/06/2010; 12.00;
DETAIL:EXP486 ;R7 CAPS 49 ; 12.00;15641956 ;28/06/2010; 12.00;
CMT:Attach Product Label 5310A To Each Unit ; 12.00;15641956 ;28/06/2010; 12.00;
DETAIL:HR269 ;PROP CAPS PFL15 345 M2 ; 12.00;15641956 ;28/06/2010; 12.00;
CMT:Attach Product Label 5321B To Each Unit ;
  
```

Spaces etc, can be removed if required by masking and there is no "maximum length" on

1. Headings are best done on the Trailer label (i.e. you get one record per input document). Details will be produced as they occur so are in sequence. This document has no "trailer" so the Associated File records for Header and Trailer are duplicated further down.
2. The first character in the "detail" section must be the separator.

Follow-up via Email from Customer, one month later:

Headers on a CSV file, only 1 required.

Hi Paul,

How do I prevent the HEADER from repeating if there are more than 1 pages?

We should only get the HEADER on top of page 1.

Cheers

Comvita

=====

From: paul [mailto:paul.green@formtrap.com]

Hi Comvita,

Use Print Rules to do this only for "Page: 1" (on both Header fields).

=====

Hi Paul,

Job done!

That was so easy thank you very much.

Cheers

Comvita

[Top](#)

[Disclaimer](#) | [Home](#) | [About Us](#) | [News](#) | [Products](#) | [Customers](#) | [Free Trial](#) | [Contact Us](#) | [Success Stories](#)

Copyright 1995-2011 TCG Information Systems Pty. Ltd. All rights reserved.