



SBE Manual V7.5

Start | Queues | Data Folders | Archive | Setup | **Submit**
 Associated Files | Other Add-ons | Related Batch Processes | Special Forms

FTDesign Manual V7.2
I'm Stuck!

PDF version

Submit Methods

- ▶ Activity Monitor
- ▶ Network
- ▶ Named Pipe
- ▶ LPR Printers

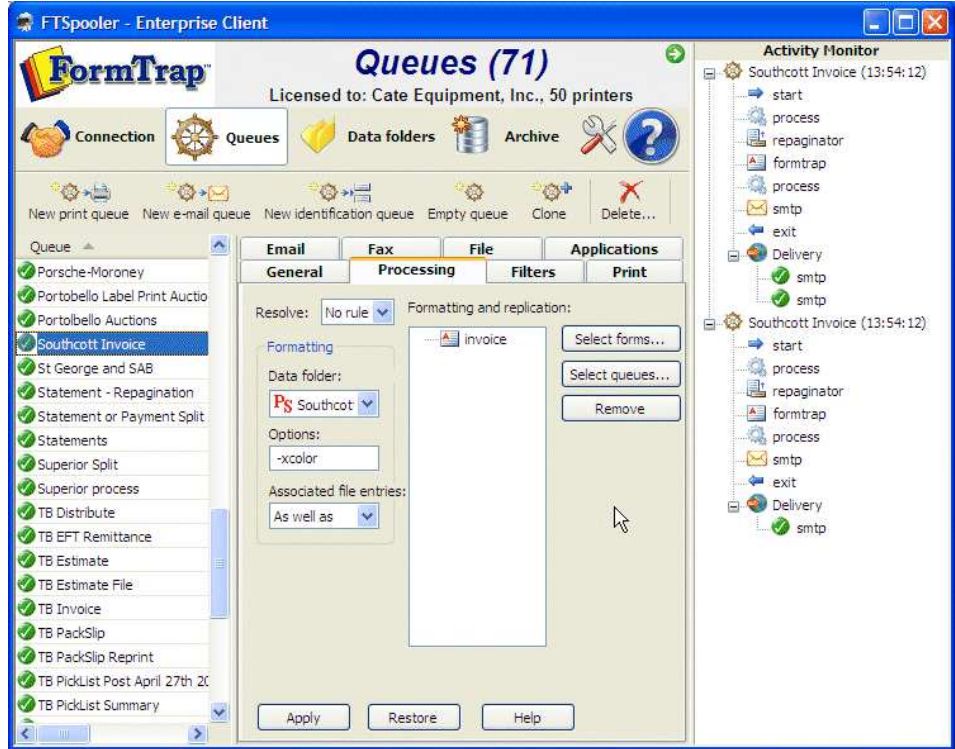
Submit Input Data for Job Processing

Once queues are created, you may produce and deliver FormTrap documents by submitting data to the queue input folder or named pipe or by printing to the line printer (TCP/IP printer). In addition you can drag and drop files with "*.txt" and "*.dat" extension to the FTSpooler main Window, and drop directly into the required queue.

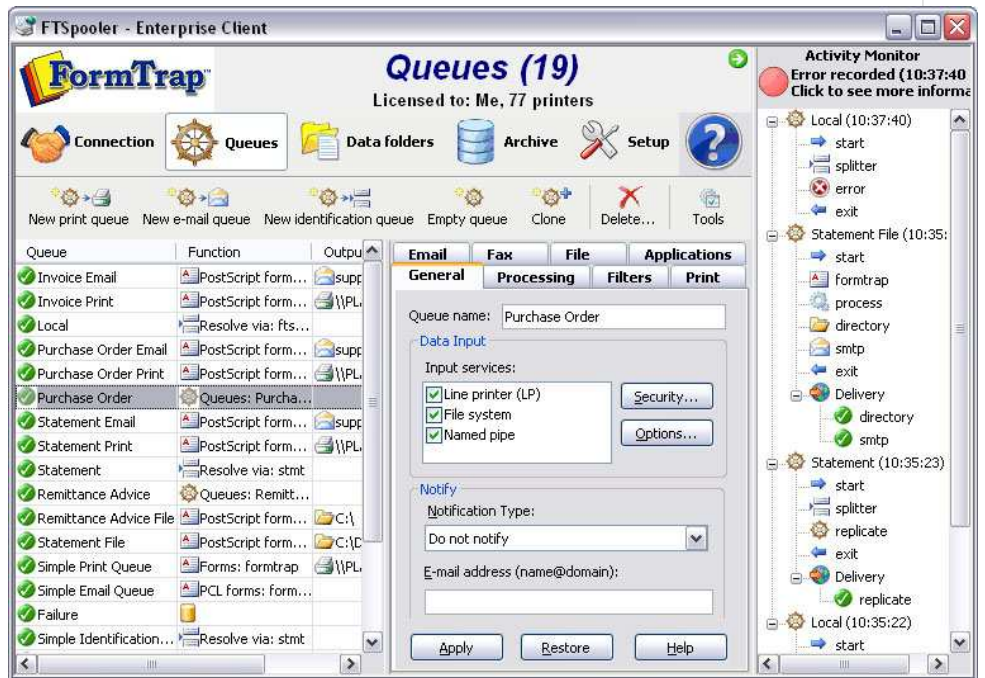
Activity Monitor

Activity Monitor shows the real-time job processing and delivery information, in brief, on the pop-up right hand side panel.

To minimize the monitor panel, click on the button.



A red light flashes indicating an error has occurred. Click to go to the Errors view of Archive for troubleshooting.



Top

